

February 12, 2020

Mr. Dan Kretsinger
Richfield Public Schools
7001 Harriet Avenue S
Richfield, MN 55423




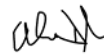

**RE: Richfield Public Schools
Short-Term Radon Testing Results
IEA Project #201911129**

Dear Mr. Kretsinger:

IEA placed five-hundred and twenty-three (523) Air Chek Pro Chek short-term radon test kits, in the following nine (9) buildings for the purpose of evaluating radon levels:

- Centennial Elementary – 50 samples
- Central Community/Ed Center – 55 samples
- Hope Church – 12 samples
- Richfield Dual Language School – 53 samples
- Richfield High School – 132 samples
- Richfield Middle School – 95 samples
- Richfield STEM – 65 samples
- Sheridan Hills Elementary – 54 samples
- Transportation – 7 samples

The radon kits were placed and retrieved by the following certified radon measurement professionals:

Ian Dickhausen	Certification Number: 00044	Signature: 
Abe Dickinson	Certification Number: 00270	Signature: 
Kennedy Peterson	Certification Number: 00046	Signature: 

The air intakes appeared to be in good condition, nothing appeared to be broken, malfunctioning or blocked, and the ventilation system operations appeared to be normal at the time of placement and retrieval.

INTRODUCTION

Radon is a colorless, odorless, tasteless, radioactive gas that occurs naturally in soil, rocks, and underground water supplies and in the ambient air. According to the U.S. Environmental Protection Agency (EPA) and other scientific organizations, naturally occurring radon gas has been associated with an increased risk of developing lung cancer. The chances of developing lung cancer from radon exposure are dependent on several factors including individual susceptibility and, perhaps more importantly, the dose and duration of exposure. Radon testing in schools is highly recommended by the Minnesota Department of Health (MDH) and EPA.

INSTITUTE FOR ENVIRONMENTAL ASSESSMENT, INC.
www.ieasafety.com

BROOKLYN PARK
9201 West Broadway, #600
Brooklyn Park, MN 55445
763-315-7900 / FAX 763-315-7920
800-233-9513

MANKATO
610 North Riverfront Drive
Mankato, MN 56001
507-345-8818 / FAX 507-345-5301
800-233-9513

ROCHESTER
210 Woodlake Drive SE
Rochester, MN 55904
507-281-6664 / FAX 507-281-6695
800-233-9513

BRAINERD
601 NW 5th Street, Ste. #4
Brainerd, MN 56401
218-454-0703 / FAX 218-454-0703
800-233-9513

MARSHALL
1420 East College Drive
Marshall, MN 56258
507-476-3599 / FAX 507-537-6985
800-233-9513

VIRGINIA
5525 Emerald Avenue
Mountain Iron, MN 55768
218-410-9521
800-233-9513

IEA placed 523 Air Chek Pro Chek short-term radon test kits in frequently occupied areas in the district buildings for the purpose of sampling for radon in accordance with the MDH's *Guidance for Radon Testing in Minnesota Schools* (2018) and ANSI/AARST 'Protocol for Conducting Measurements of Radon and Radon Decay Products in Schools and Large Buildings' (ANSI/AARST MALB 2014). A total of 523 radon test kits were placed from January 7, 2020, to January 10, 2020, for a total short-term sampling period of three (3) days. Thirteen (13) radon test kits were missing at the time of pick-up. The radon test kits were analyzed by AirChek, Inc., MDH license #RL-00003, located at 1936 Butler Bridge Road, Mills River, NC 28759. The sampling and analysis methodologies are provided in Appendix A. IEA followed ANSI/AARST MALB 2014 for quality assurance measurements by including duplicate kits, control kits (blanks), and spiked kits.

EVALUATION CRITERIA

The MDH and the EPA have established a recommended action level in frequently occupied areas of 4.0 picocuries per liter (pCi/L) for an annual average. Testing was conducted during school days when the building is significantly occupied. The HVAC system was set as it normally is during school days. Testing was conducted during the heating season when the average outdoor temperature is less than 65°F, as recommended by the MDH, when the ventilation system was operating normally, and windows and doors were closed. Consequently, sampling under these "closed" conditions is when the radon risk is most likely to occur.

MDH recommends follow-up testing for sampling results that are above the action level. Please refer to the following table for MDH guidelines:

RESULTS (pCi/L)	RECOMMENDED ACTION
LESS THAN 4	Re-test after changes to foundation or HVAC and every 5 years
GREATER THAN 4	Conduct CRM short-term testing during winter months
LESS THAN 4 (<u>DURING OCCUPANCY</u>) AFTER CRM TESTING	Repeat CRM testing if not conducted during winter or if conducted during abnormal ventilation. Otherwise consider re-testing after changes to foundation or HVAC and every 5 years
GREATER THAN 4 (<u>DURING OCCUPANCY</u>) AFTER CRM TESTING	Reduce radon in rooms to less than 4 through radon mitigation. Conduct CRM testing to verify radon reduction.

CRM: Continuous Radon Monitor

RESULTS & DISCUSSION

The laboratory reports, and maps of each building with sampling locations marked, are provided in Appendix B. The chain of custody cover pages are also provided in Appendix B. Following are summary results for each building.

Centennial Elementary

7315 Bloomington Avenue S
Richfield, MN 55423

A total of fifty (50) test kits were placed at Centennial Elementary. The one (1) test kit in the Mothers' Room was damaged when the test kits were collected. Note these locations will need to be completed in the future: The Gymnasium (needs 4 test kits) plus the Gymnasium Side Room and Room 137 were not included in this testing. The results for the 49 test kits ranged from below the level of detection (<0.3 pCi/L) to 1.4 pCi/L. The results indicated that radon levels were below the action level of 4 pCi/L. See Table 1 on the next page for a summary of the results.

TABLE 1: Centennial Elementary RANGE OF RESULTS				
	0.0 – 1.9 pCi/L	2.0 – 2.9 pCi/L	3.0 – 3.9 pCi/L	≥ 4 pCi/L
Number of Tests	49	0	0	0
All below action level				

pCi/L: picocuries per liter

Central Community/Education Center

7145 Harriet Avenue S
Richfield, MN 55423

A total of fifty-five (55) test kits were placed at Central Community/Education Center. The one (1) kit in Room 105 was missing when the test kits were collected. The results for the 54 test kits ranged from below the level of detection (<0.3 pCi/L) to 2.5 pCi/L. The results indicated that radon levels were below the action level of 4 pCi/L. See Table 2 for a summary of the results:

TABLE 2: Central Community/Education Center RANGE OF RESULTS				
	0.0 – 1.9 pCi/L	2.0 – 2.9 pCi/L	3.0 – 3.9 pCi/L	≥ 4 pCi/L
Number of Tests	52	2	0	0
All below action level				

pCi/L: picocuries per liter

Hope Church

7132 Portland Avenue S
Richfield, MN 55423

A total of twelve (12) test kits were placed at Hope Church. Two (2) kits in the Gymnasium were missing when the test kits were collected. Note, one (1) location, the Courtyard Room, was not included in this testing and this will need to be completed in the future. The results for the 10 test kits ranged from below the level of detection (<0.3 pCi/L) to 1.1 pCi/L. The results indicated that radon levels were below the action level of 4 pCi/L. See Table 3 for a summary of the results:

TABLE 3: Hope Church RANGE OF RESULTS				
	0.0 – 1.9 pCi/L	2.0 – 2.9 pCi/L	3.0 – 3.9 pCi/L	≥ 4 pCi/L
Number of Tests	10	0	0	0
All below action level				

pCi/L: picocuries per liter

Richfield Dual Language School

7001 Elliot Avenue S
Richfield, MN 55423

A total of fifty-three (53) test kits were placed at Richfield Dual Language School. The one (1) test kit in Room 135 was missing when the test kits were collected. The results for the 52 test kits ranged from below the level of detection (<0.3 pCi/L) to 1.2 pCi/L. The results indicated that radon levels were below the action level of 4 pCi/L. See Table 4 for a summary of the results:

TABLE 4: Richfield Dual Language School RANGE OF RESULTS				
	0.0 – 1.9 pCi/L	2.0 – 2.9 pCi/L	3.0 – 3.9 pCi/L	≥ 4 pCi/L
Number of Tests	52	0	0	0
All below action level				

pCi/L: picocuries per liter

Richfield High School

7001 Harriet Avenue S
Richfield, MN 55423

A total of one-hundred and thirty-two (132) test kits were placed at Richfield High School. Two (2) test kits, one each in Rooms 102 Gym 5 and 106A Gym 7, were missing when the test kits were collected. Note, because a window was open in Room 135 during the testing period, this location will need to be retested. The results for the 129 test kits ranged from below the level of detection (<0.3 pCi/L) to 3.0 pCi/L. The results indicated that radon levels were below the action level of 4 pCi/L. See Table 5 for a summary of the results:

TABLE 5: Richfield High School RANGE OF RESULTS				
	0.0 – 1.9 pCi/L	2.0 – 2.9 pCi/L	3.0 – 3.9 pCi/L	≥ 4 pCi/L
Number of Tests	127	1	1	0
All below action level				

pCi/L: picocuries per liter

Richfield Middle School

7461 Oliver Avenue S
Richfield, MN 55423

A total of ninety-five (95) test kits were placed at Richfield Middle School. Six (6) test kits, one each in Rooms NE & SE Lunchroom, Pool Locker Room, Pool Deck, Gym 1, and 112, were missing when the test kits were collected. The test kit in Room 227 (the Field Blank) was damaged when the test kits were collected. The results for the 88 test kits ranged from below the level of detection (<0.3 pCi/L) to 0.9 pCi/L. The results indicated that radon levels were below the action level of 4 pCi/L. See Table 6 for a summary of the results:

TABLE 6: Richfield Middle School RANGE OF RESULTS				
	0.0 – 1.9 pCi/L	2.0 – 2.9 pCi/L	3.0 – 3.9 pCi/L	≥ 4 pCi/L
Number of Tests	88	0	0	0
All below action level				

pCi/L: picocuries per liter

Richfield STEM

7020 – 12th Avenue S
Richfield, MN 55423

A total of sixty-five (65) test kits were placed at Richfield STEM. The results ranged from below the level of detection (<0.3 pCi/L) to 1.0 pCi/L. The results indicated that radon levels were below the action level of 4 pCi/L. See Table 7 for a summary of the results:

TABLE 7: Richfield STEM RANGE OF RESULTS				
	0.0 – 1.9 pCi/L	2.0 – 2.9 pCi/L	3.0 – 3.9 pCi/L	≥ 4 pCi/L
Number of Tests	65	0	0	0
All below action level				

pCi/L: picocuries per liter

Sheridan Hills Elementary

6400 Sheridan Avenue S
Richfield, MN 55423

A total of fifty-four (54) test kits were placed at Sheridan Hills Elementary. The one (1) test kit in Room 144 was missing when the test kits were collected. The results for the 53 test kits ranged from below the level of detection (<0.3 pCi/L) to 2.2 pCi/L. The results indicated that radon levels were below the action level of 4 pCi/L. See Table 8 for a summary of the results:

TABLE 8: Sheridan Hills Elementary RANGE OF RESULTS				
	0.0 – 1.9 pCi/L	2.0 – 2.9 pCi/L	3.0 – 3.9 pCi/L	≥ 4 pCi/L
Number of Tests	52	1	0	0
All below action level				

pCi/L: picocuries per liter

Transportation

300 W 72nd Street
Richfield, MN 55423

A total of seven (7) test kits were placed at the Transportation building. The results ranged from below the level of detection (<0.3 pCi/L) to 1.9 pCi/L. The results indicated that radon levels were below the action level of 4 pCi/L. See Table 9 for a summary of the results:

TABLE 9: Transportation RANGE OF RESULTS				
	0.0 – 1.9 pCi/L	2.0 – 2.9 pCi/L	3.0 – 3.9 pCi/L	≥ 4 pCi/L
Number of Tests	7	0	0	0
All below action level				

pCi/L: picocuries per liter

CONCLUSIONS & RECOMMENDATIONS

The radon levels in the sampled locations were below the EPA action level of 4 pCi/L. It is recommended actions be taken to address results of radon concentrations greater than half the action level (2-4 pCi/L).

Guidelines 1-4 should also be considered if test results indicate radon concentrations between 2-4 pCi/L during the first round of testing. If radon levels continue to indicate concentrations between 2-4 guideline 5 should be considered:

1. If the initial test results are greater than 4 pCi/L, conduct Continuous Radon Monitoring short-term testing during the winter months.
2. If the average radon levels from the CRM are below 4 pCi/L during occupancy, then consider re-testing after changes to the building foundation or HVAC system and every 5 years.
3. If the average radon levels from the CRM are above 4 pCi/L during occupancy, then the building HVAC system settings (e.g. start time, night set-back temperature) should be adjusted to allow for improved airflow (and thereby reduce radon infiltration into the building). Conduct follow-up CRM testing to verify radon reduction. Continue to operate HVAC system under adjusted settings to keep radon levels within an acceptable range. Documentation should be kept with HVAC operation instructions for responsible site staff and the Director of Facilities & Transportation to make sure that settings are maintained in the future.
4. If the follow-up average radon levels from the CRM are still above 4 pCi/L during occupancy (after the HVAC adjustments have been made), then the district should contact a professional radon mitigation contractor for assistance. IEA recommends using a contact with experience specific to schools.

5. Mitigation is not complete until retests provide evidence of the initial status of system effectiveness. Conduct a short-term radon measurement no sooner than 24 hours after a mitigation system is operational and within 30 days after installation of the systems. Repeat the test as soon as possible or within one year under conditions that reasonably represent:
 - Average building operating conditions that normally exist during the greatest amount of significantly occupied time.
 - Building operating conditions most likely to clearly characterize a radon hazard.

The EPA has established recommended guidelines for permissible radon concentrations in schools. The following are general recommendations for frequently occupied areas of schools:

- Retest the building at least every 5 years and in conjunction with any sale of a building.
- In addition, be certain to test again when any of the following circumstances occur:
 - A new addition is constructed, or a significant renovation occurs
 - A ground contact area not previously tested is occupied
 - Heating or cooling systems are significantly altered resulting in changes to air pressures or distribution
 - Ventilation is significantly altered by extensive weatherization, changes to mechanical systems, or comparable procedures
 - Significant openings to soil occur due to:
 - Ground water or slab surface water control systems (e.g., sumps, perimeter drain tile, shower/tub retrofits, etc.) or
 - Natural settlement causing major cracks to develop
 - Earthquakes, construction blasting, or formation of sink holes nearby or
 - A mitigation system is altered, modified or repaired
- Rooms should be retested during the winter heating season (i.e. under “closed” conditions) which is typically “worst case” conditions.
- Per Minnesota Statutes, section 123B.571, school districts are required to report radon test results at a school board meeting and report results to the MDH. IEA is able to assist with presenting results to the school board, and the MDH reporting. The MDH ‘School Radon Testing Form’ filled out for each location are located in Appendix E.

For more information regarding radon, see the EPA’s A Citizen’s Guide to Radon at <http://www.epa.gov/radon>. MDH can be contacted at health.indoorair@state.mn.us or 651-201-4601.

GENERAL COMMENTS

The analysis and opinions expressed in this report are based upon data obtained from radon sampling in the district and are representative of the locations and time period sampled. This report does not reflect variations in conditions that may occur across the site, property, or facility. Actual conditions may vary and may not become evident without further assessment.

The report is prepared for the exclusive use of our client for specific application to the project discussed and has been prepared in accordance with generally accepted environmental, health and safety practices. Other than as provided in the preceding sentence and in our Proposal #8520 dated October 14, 2019, regarding radon sampling services at the district locations, including the General Conditions attached thereto, no warranties are extended or made.

IEA appreciates the opportunity to submit this analysis to the district. Should you require additional radon testing or have any questions regarding radon or any other environmental, health, or safety-related concerns, please do not hesitate to contact our office.

Sincerely,

IEA, Inc.



Dan Holcomb
EHS Account Manager

Reviewed by:



Karen Weiblen
EHS/IEQ Consultant

DH/khb 02122020

Enc.

Appendix A

Methodology and Quality Control Measurements

Sampling Methodology

IEA placed Air Chek, Inc. Pro Chek activated charcoal radon test kits designed specifically for the detection of gamma emissions caused by the decay of Radon-222 and its daughter products. The kit is made of a padded envelope which contains activated charcoal. The kit is placed during normal occupancy HVAC operations and sealed with vinyl tape after 72 to 96 hours of indoor exposure. Individual kits are uniquely identified with a number and corresponding bar code.

Upon receipt at the analytical laboratory, the kits are logged in using the unique numbers assigned to each kit. The kits are placed on a gamma detector to count the gamma emissions from the decay of radon adsorbed by the charcoal. A calibration factor determined in part by the exposure time and decay time is used to calculate the radon concentration. A correction factor is also applied for weight gain from any moisture absorbed by the charcoal during the sampling period.

Any unusual conditions are noted on the processing form and shown on the exposure report.

MDH and ANSI/AARST MALB 2014 Quality Control Measurements

IEA followed ANSI/AARST MALB 2014 and MDH recommendations for quality assurance measurements to ensure the accuracy of test results. Quality assurance measurements include side-by-side test kits (duplicates) and unexposed control test kits (blanks).

Duplicates are pairs of test kits placed 4-8 inches apart for the same test period. Duplicates are stored, placed, retrieved, and shipped to the laboratory for analysis in the same manner as the other test kits so that the laboratory cannot distinguish them. Since duplicates are placed side-by-side, the measured values for radon should be the same. The average of all duplicates' relative percent difference (RPD) should not exceed 25%. If they do, an investigation to identify the cause may be warranted and could include repeating the measurements.

ANSI/AARST MALB 2014 requires the reporting of duplicate measurements and their average. See Table 10.

Table 10: Duplicate Device Measurements and Averages				
Building	Location	Test 1 (pCi/L)	Test 2 (pCi/L)	Average (pCi/L)
Centennial Elementary	138	< 0.3	< 0.3	< 0.3
Central Education	106	< 0.3	< 0.3	< 0.3
Central Education	306	< 0.3	< 0.3	< 0.3
Central Education	401	< 0.3	< 0.3	< 0.3
Hope Church	C340	1.1	0.9	1.0
RDLS	106	0.5	< 0.3	0.4
RDLS	118	0.6	< 0.3	0.4
RDLS	144	0.5	1.0	0.8
Richfield High School	100	1.3	1.4	1.4
Richfield High School	101	< 0.3	0.5	0.4
Richfield High School	109	0.5	0.5	0.5
Richfield High School	120	0.8	< 0.3	0.5
Richfield High School	136	0.9	0.6	0.8
Richfield High School	149	< 0.3	< 0.3	< 0.3
Richfield High School	181	< 0.3	< 0.3	< 0.3
Richfield High School	188A	< 0.3	< 0.3	< 0.3
Richfield High School	Girls' Locker Room West	1.2	0.9	1.1
Richfield Middle School	122	< 0.3	< 0.3	< 0.3
Richfield Middle School	321	< 0.3	< 0.3	< 0.3
Richfield Middle School	Women's Locker Room	< 0.3	< 0.3	< 0.3
Richfield STEM	102B	< 0.3	< 0.3	< 0.3
Richfield STEM	109	< 0.3	0.5	0.4
Richfield STEM	127	0.7	0.6	0.7
Richfield STEM	232	1.0	0.7	0.9
Sheridan Hills Elementary	107	1.4	1.9	1.7
Sheridan Hills Elementary	149	< 0.3	< 0.3	< 0.3

Blanks can be used to determine whether the manufacturing, shipping, storage, or processing of the detector has “contaminated” your measurements. Blanks are opened and immediately re-sealed to keep room air from infiltrating the test kit. Blanks are labeled and shipped in the same manner as the exposed test kits so that the laboratory cannot distinguish them. Since blanks are not exposed to radon, their measurement value should be below the lower limit of detection. The field blanks are listed in the laboratory reports as “F138” at Centennial Elementary; “FCustodial Office-1, FCustodial Office-2, FCustodial Office-3, and FCustodial Office-4” at Central Education; “FC340-1 and FC340-2” at Hope Church; “F141E-1, F141E-2, and F141E-3” at RDLs; “FCustodial Office-1, FCustodial Office-2, and FCustodial Office-3” at Richfield High School; “FCC3 and FKitchen Office” at Richfield Middle School; “F140-1, F140-2, and F140-3 at Richfield STEM; “F139, F139A, and F139B” at Sheridan Hills Elementary; and “FBreakroom-1 and FBreakroom-2” at Transportation. All the results are < 0.3 pCi/L. The office blank testing result is < 0.3 pCi/L. See Table 11 for Lab-Transit blanks results completed for our laboratory.

Table 11: Lab-Transit Blanks		
Date	Device ID	Radon Concentration
4/17/2019	9169251	<0.3
4/17/2019	9169252	<0.3
4/17/2019	9169253	<0.3
4/17/2019	9169254	<0.3
4/17/2019	9169255	<0.3
11/9/2019	9184108	<0.3

Spikes are test kits that have been exposed in a chamber to a known concentration of radon. Using spiked measurements can help evaluate the accuracy of a laboratory analysis and/or how accurately test kits supplied by a laboratory measure radon. Spiked test kits are labeled and shipped in the same manner as the exposed test kits so that the laboratory cannot distinguish them. See Table 12 for the spiked results completed for our laboratory.

Table 12: Spiked Detectors			
Date	Device ID	Measured Value (pCi/L)	Reference Value (pCi/L)
11/11/2019	0001	22.9	24.0
11/11/2019	0002	26.9	24.0
11/11/2019	0003	24.3	24.0

Appendix B

*Laboratory Reports, Maps, and
Chain-of-Custody Cover Pages*

Radon test result report for:**RICHFIELD PUBLIC SCHOOLS
CENTENNIAL ELEMENTARY SCHOOL**

Kit #	Room Id	Started	Ended	pCi/L	Analyzed
9329198	101	2020-01-07 @ 2:00 pm	2020-01-10 @ 12:00 pm	0.8 ± 0.4	2020-01-14
9329151	102	2020-01-07 @ 1:00 pm	2020-01-10 @ 12:00 pm	0.6 ± 0.4	2020-01-14
9329189	103	2020-01-07 @ 1:00 pm	2020-01-10 @ 12:00 pm	0.7 ± 0.4	2020-01-14
9329188	104	2020-01-07 @ 1:00 pm	2020-01-10 @ 12:00 pm	0.8 ± 0.4	2020-01-14
9329194	105	2020-01-07 @ 1:00 pm	2020-01-10 @ 12:00 pm	< 0.3	2020-01-14
9329183	107	2020-01-07 @ 1:00 pm	2020-01-10 @ 12:00 pm	0.6 ± 0.4	2020-01-14
9329193	108	2020-01-07 @ 1:00 pm	2020-01-10 @ 12:00 pm	0.9 ± 0.4	2020-01-14
9329197	109	2020-01-07 @ 1:00 pm	2020-01-10 @ 12:00 pm	< 0.3	2020-01-14
9329200	110	2020-01-07 @ 1:00 pm	2020-01-10 @ 12:00 pm	< 0.3	2020-01-14
9329153	111	2020-01-07 @ 1:00 pm	2020-01-10 @ 12:00 pm	< 0.3	2020-01-14
9329160	112	2020-01-07 @ 1:00 pm	2020-01-10 @ 12:00 pm	< 0.3	2020-01-14
9329152	113	2020-01-07 @ 1:00 pm	2020-01-10 @ 12:00 pm	< 0.3	2020-01-14
9329172	114	2020-01-07 @ 1:00 pm	2020-01-10 @ 12:00 pm	0.7 ± 0.4	2020-01-14
9329156	116	2020-01-07 @ 1:00 pm	2020-01-10 @ 12:00 pm	0.6 ± 0.4	2020-01-14
9329157	117	2020-01-07 @ 1:00 pm	2020-01-10 @ 12:00 pm	0.6 ± 0.3	2020-01-14
9329154	118	2020-01-07 @ 1:00 pm	2020-01-10 @ 12:00 pm	< 0.3	2020-01-14
9329159	119	2020-01-07 @ 1:00 pm	2020-01-10 @ 12:00 pm	< 0.3	2020-01-14
9329166	120	2020-01-07 @ 1:00 pm	2020-01-10 @ 12:00 pm	0.6 ± 0.4	2020-01-14
9329173	121	2020-01-07 @ 1:00 pm	2020-01-10 @ 12:00 pm	0.9 ± 0.3	2020-01-14
9329167	122	2020-01-07 @ 1:00 pm	2020-01-10 @ 12:00 pm	0.9 ± 0.4	2020-01-14
9329161	123	2020-01-07 @ 1:00 pm	2020-01-10 @ 12:00 pm	0.8 ± 0.4	2020-01-14
9329169	124	2020-01-07 @ 1:00 pm	2020-01-10 @ 12:00 pm	1.1 ± 0.4	2020-01-14
9329182	125	2020-01-07 @ 2:00 pm	2020-01-10 @ 12:00 pm	< 0.3	2020-01-14
9329178	126	2020-01-07 @ 1:00 pm	2020-01-10 @ 12:00 pm	< 0.3	2020-01-14
9329181	127	2020-01-07 @ 1:00 pm	2020-01-10 @ 12:00 pm	< 0.3	2020-01-14
9329187	128	2020-01-07 @ 1:00 pm	2020-01-10 @ 12:00 pm	0.6 ± 0.4	2020-01-14
9329195	129	2020-01-07 @ 1:00 pm	2020-01-10 @ 12:00 pm	1.1 ± 0.5	2020-01-14
9329179	130	2020-01-07 @ 1:00 pm	2020-01-10 @ 12:00 pm	< 0.3	2020-01-14
9329196	131	2020-01-07 @ 1:00 pm	2020-01-10 @ 12:00 pm	< 0.3	2020-01-14
9329155	132	2020-01-07 @ 1:00 pm	2020-01-10 @ 12:00 pm	0.5 ± 0.3	2020-01-14
9329174	135	2020-01-07 @ 1:00 pm	2020-01-10 @ 12:00 pm	0.5 ± 0.4	2020-01-14
9329162	136	2020-01-07 @ 1:00 pm	2020-01-10 @ 12:00 pm	1.0 ± 0.4	2020-01-14
9329190	139	2020-01-07 @ 2:00 pm	2020-01-10 @ 12:00 pm	< 0.3	2020-01-14
9329164	CAFETERIA NORTH	2020-01-07 @ 1:00 pm	2020-01-10 @ 12:00 pm	0.6 ± 0.4	2020-01-14
9329168	CAFETERIA SOUTH	2020-01-07 @ 1:00 pm	2020-01-10 @ 12:00 pm	0.9 ± 0.4	2020-01-14
9329180	COT ROOM	2020-01-07 @ 2:00 pm	2020-01-10 @ 12:00 pm	< 0.3	2020-01-14
9329170	CUSTODIAL OFFICE	2020-01-07 @ 1:00 pm	2020-01-10 @ 12:00 pm	0.6 ± 0.4	2020-01-14

January 14, 2020

**** LABORATORY ANALYSIS REPORT ****

Radon test result report for:

**RICHFIELD PUBLIC SCHOOLS
CENTENNIAL ELEMENTARY SCHOOL**

Kit #	Room Id	Started	Ended	pCi/L	Analyzed
9329184	D138 - 2	2020-01-07 @ 2:00 pm	2020-01-10 @ 12:00 pm	< 0.3	2020-01-14
9329199	D138-1	2020-01-07 @ 2:00 pm	2020-01-10 @ 12:00 pm	< 0.3	2020-01-14
9329192	F138	2020-01-07 @ 2:00 pm	2020-01-10 @ 12:00 pm	< 0.3	2020-01-14
9329176	KITCHEN	2020-01-07 @ 1:00 pm	2020-01-10 @ 12:00 pm	0.6 ± 0.4	2020-01-14
9329171	KITCHEN OFFICE	2020-01-07 @ 1:00 pm	2020-01-10 @ 12:00 pm	1.4 ± 0.4	2020-01-14
9329158	LIBRARY OFFICE	2020-01-07 @ 1:00 pm	2020-01-10 @ 12:00 pm	0.5 ± 0.3	2020-01-14
9329177	MAIN OFFICE CONFERENCE ROOM	2020-01-07 @ 1:00 pm	2020-01-10 @ 12:00 pm	< 0.3	2020-01-14
9329163	MEDIA CENTER NORTH	2020-01-07 @ 1:00 pm	2020-01-10 @ 12:00 pm	0.7 ± 0.4	2020-01-14
9329165	MEDIA CENTER SOUTH	2020-01-07 @ 1:00 pm	2020-01-10 @ 12:00 pm	< 0.3	2020-01-14
9329185	MOTHERS ROOM	2020-01-07 @ 2:00 pm	2020-01-10 @ 1:00 pm	???? UI	2020-01-14
9329191	NURSE OFFICE	2020-01-07 @ 2:00 pm	2020-01-10 @ 12:00 pm	< 0.3	2020-01-14
9329175	PRINCIPALS OFFICE	2020-01-07 @ 1:00 pm	2020-01-10 @ 12:00 pm	< 0.3	2020-01-14
9329186	SOCIAL WORKER OFFICE	2020-01-07 @ 2:00 pm	2020-01-10 @ 12:00 pm	< 0.3	2020-01-14

Air Chek 1936 Butler Bridge Rd, Mills River, NC 28759-3892 Phone: (828) 684-0893 Fax: (828) 684-8498

Radon test result report for:**RICHFIELD PUBLIC SCHOOLS
CENTRAL EDUCATION**

Kit #	Room Id	Started	Ended	pCi/L	Analyzed
9329658	100	2020-01-07 @ 12:00 pm	2020-01-10 @ 10:00 am	0.6 ± 0.4	2020-01-14
9329663	100A	2020-01-07 @ 12:00 pm	2020-01-10 @ 11:00 am	0.6 ± 0.4	2020-01-14
9329664	100B	2020-01-07 @ 12:00 pm	2020-01-10 @ 11:00 am	1.0 ± 0.4	2020-01-14
9329665	100C	2020-01-07 @ 12:00 pm	2020-01-10 @ 11:00 am	0.5 ± 0.3	2020-01-14
9329666	100D	2020-01-07 @ 12:00 pm	2020-01-10 @ 11:00 am	< 0.3	2020-01-14
9329650	101	2020-01-07 @ 11:00 am	2020-01-10 @ 11:00 am	< 0.3	2020-01-14
9329655	102	2020-01-07 @ 11:00 am	2020-01-10 @ 11:00 am	< 0.3	2020-01-14
9329654	103	2020-01-07 @ 11:00 am	2020-01-10 @ 11:00 am	0.8 ± 0.4	2020-01-14
9329656	104	2020-01-07 @ 11:00 am	2020-01-10 @ 11:00 am	< 0.3	2020-01-14
9329635	106 - D1	2020-01-07 @ 11:00 am	2020-01-10 @ 11:00 am	< 0.3	2020-01-14
9329636	106 - D2	2020-01-07 @ 11:00 am	2020-01-10 @ 11:00 am	< 0.3	2020-01-14
9329646	200A	2020-01-07 @ 11:00 am	2020-01-10 @ 10:00 am	< 0.3	2020-01-14
9329647	200B	2020-01-07 @ 11:00 am	2020-01-10 @ 10:00 am	< 0.3	2020-01-14
9329648	200C	2020-01-07 @ 11:00 am	2020-01-10 @ 10:00 am	< 0.3	2020-01-14
9329649	200D	2020-01-07 @ 11:00 am	2020-01-10 @ 10:00 am	< 0.3	2020-01-14
9329645	201	2020-01-07 @ 11:00 am	2020-01-10 @ 10:00 am	< 0.3	2020-01-14
9329620	202	2020-01-07 @ 11:00 am	2020-01-10 @ 10:00 am	< 0.3	2020-01-14
9329621	203	2020-01-07 @ 11:00 am	2020-01-10 @ 10:00 am	< 0.3	2020-01-14
9329627	204	2020-01-07 @ 11:00 am	2020-01-10 @ 10:00 am	< 0.3	2020-01-14
9329628	205	2020-01-07 @ 11:00 am	2020-01-10 @ 10:00 am	< 0.3	2020-01-14
9329638	206	2020-01-07 @ 11:00 am	2020-01-10 @ 10:00 am	< 0.3	2020-01-14
9329640	301	2020-01-07 @ 11:00 am	2020-01-10 @ 10:00 am	0.7 ± 0.4	2020-01-14
9329601	302	2020-01-07 @ 11:00 am	2020-01-10 @ 10:00 am	0.6 ± 0.4	2020-01-14
9329612	303	2020-01-07 @ 11:00 am	2020-01-10 @ 10:00 am	0.9 ± 0.4	2020-01-14
9329641	304	2020-01-07 @ 11:00 am	2020-01-10 @ 10:00 am	< 0.3	2020-01-14
9329605	305	2020-01-07 @ 11:00 am	2020-01-10 @ 10:00 am	< 0.3	2020-01-14
9329642	306 - D1	2020-01-07 @ 11:00 am	2020-01-10 @ 10:00 am	< 0.3	2020-01-14
9329613	306 - D2	2020-01-07 @ 11:00 am	2020-01-10 @ 10:00 am	< 0.3	2020-01-14
9329606	306 OFFICE	2020-01-07 @ 11:00 am	2020-01-10 @ 10:00 am	< 0.3	2020-01-14
9329619	396	2020-01-07 @ 11:00 am	2020-01-10 @ 10:00 am	0.9 ± 0.4	2020-01-14
9329618	400	2020-01-07 @ 11:00 am	2020-01-10 @ 10:00 am	1.8 ± 0.5	2020-01-14
9329623	400A	2020-01-07 @ 11:00 am	2020-01-10 @ 10:00 am	1.1 ± 0.4	2020-01-14
9329624	400B	2020-01-07 @ 11:00 am	2020-01-10 @ 10:00 am	1.4 ± 0.4	2020-01-14
9329611	400C	2020-01-07 @ 11:00 am	2020-01-10 @ 10:00 am	0.9 ± 0.4	2020-01-14
9329643	400D	2020-01-07 @ 12:00 pm	2020-01-10 @ 10:00 am	1.1 ± 0.4	2020-01-14
9329625	401 - D1	2020-01-07 @ 11:00 am	2020-01-10 @ 10:00 am	< 0.3	2020-01-14
9329626	401 - D2	2020-01-07 @ 11:00 am	2020-01-10 @ 10:00 am	< 0.3	2020-01-14

Radon test result report for:**RICHFIELD PUBLIC SCHOOLS
CENTRAL EDUCATION**

Kit #	Room Id	Started	Ended	pCi/L	Analyzed
9329631	402	2020-01-07 @ 11:00 am	2020-01-10 @ 10:00 am	< 0.3	2020-01-14
9329632	403	2020-01-07 @ 11:00 am	2020-01-10 @ 10:00 am	< 0.3	2020-01-14
9329633	404	2020-01-07 @ 11:00 am	2020-01-10 @ 10:00 am	< 0.3	2020-01-14
9329639	405	2020-01-07 @ 11:00 am	2020-01-10 @ 10:00 am	< 0.3	2020-01-14
9329634	406	2020-01-07 @ 11:00 am	2020-01-10 @ 10:00 am	< 0.3	2020-01-14
9329617	500 N	2020-01-07 @ 11:00 am	2020-01-10 @ 10:00 am	2.5 ± 0.5	2020-01-14
9329602	500 S	2020-01-07 @ 11:00 am	2020-01-10 @ 10:00 am	2.2 ± 0.4	2020-01-14
9329603	500A	2020-01-07 @ 11:00 am	2020-01-10 @ 10:00 am	1.6 ± 0.4	2020-01-14
9329622	600 N	2020-01-07 @ 11:00 am	2020-01-10 @ 10:00 am	1.3 ± 0.4	2020-01-14
9329637	600 NM	2020-01-07 @ 11:00 am	2020-01-10 @ 10:00 am	1.0 ± 0.4	2020-01-14
9329630	600 S	2020-01-07 @ 11:00 am	2020-01-10 @ 10:00 am	0.8 ± 0.4	2020-01-14
9329629	600 SM	2020-01-07 @ 11:00 am	2020-01-10 @ 10:00 am	0.8 ± 0.3	2020-01-14
9329607	CUSTODIAL OFFICE	2020-01-07 @ 11:00 am	2020-01-10 @ 10:00 am	0.7 ± 0.4	2020-01-14
9329608	CUSTODIAL OFFICE - F1	2020-01-07 @ 11:00 am	2020-01-10 @ 10:00 am	< 0.3	2020-01-14
9329615	CUSTODIAL OFFICE - F2	2020-01-07 @ 11:00 am	2020-01-10 @ 10:00 am	< 0.3	2020-01-14
9329616	CUSTODIAL OFFICE - F3	2020-01-07 @ 11:00 am	2020-01-10 @ 10:00 am	< 0.3	2020-01-14
9329614	CUSTODIAL OFFICE - F4	2020-01-07 @ 11:00 am	2020-01-10 @ 10:00 am	< 0.3	2020-01-14

January 14, 2020

**** LABORATORY ANALYSIS REPORT ****

Radon test result report for:

**RICHFIELD PUBLIC SCHOOLS
HOPE CHURCH**

Kit #	Room Id	Started	Ended	pCi/L	Analyzed
9326287	C342	2020-01-07 @ 11:00 am	2020-01-10 @ 10:00 am	1.0 ± 0.4	2020-01-14
9326298	C343	2020-01-07 @ 11:00 am	2020-01-10 @ 10:00 am	1.0 ± 0.4	2020-01-14
9326299	C344	2020-01-07 @ 11:00 am	2020-01-10 @ 10:00 am	1.1 ± 0.4	2020-01-14
9326291	C345	2020-01-07 @ 11:00 am	2020-01-10 @ 10:00 am	1.1 ± 0.4	2020-01-14
9326297	C346	2020-01-07 @ 11:00 am	2020-01-10 @ 10:00 am	0.7 ± 0.3	2020-01-14
9326292	C347	2020-01-07 @ 11:00 am	2020-01-10 @ 10:00 am	1.1 ± 0.4	2020-01-14
9326300	D-C340-1	2020-01-07 @ 11:00 am	2020-01-10 @ 10:00 am	0.9 ± 0.3	2020-01-14
9326286	D-C340-1	2020-01-07 @ 11:00 am	2020-01-10 @ 10:00 am	1.1 ± 0.4	2020-01-14
9326293	F-C340-1	2020-01-07 @ 11:00 am	2020-01-10 @ 10:00 am	< 0.3	2020-01-14
9326294	F-C340-2	2020-01-07 @ 11:00 am	2020-01-10 @ 10:00 am	< 0.3	2020-01-14

Air Chek 1936 Butler Bridge Rd, Mills River, NC 28759-3892 Phone: (828) 684-0893 Fax: (828) 684-8498

Radon test result report for:**RICHFIELD PUBLIC SCHOOLS
RDLS**

Kit #	Room Id	Started	Ended	pCi/L	Analyzed
9325964	101	2020-01-07 @ 7:00 am	2020-01-10 @ 8:00 am	< 0.3	2020-01-14
9325961	102	2020-01-07 @ 7:00 am	2020-01-10 @ 8:00 am	0.6 ± 0.3	2020-01-14
9325966	103	2020-01-07 @ 7:00 am	2020-01-10 @ 8:00 am	< 0.3	2020-01-14
9325963	104	2020-01-07 @ 7:00 am	2020-01-10 @ 8:00 am	0.6 ± 0.3	2020-01-14
9325965	105	2020-01-07 @ 6:00 am	2020-01-10 @ 8:00 am	< 0.3	2020-01-14
9325967	107	2020-01-07 @ 6:00 am	2020-01-10 @ 8:00 am	< 0.3	2020-01-14
9325950	108	2020-01-07 @ 6:00 am	2020-01-10 @ 8:00 am	0.6 ± 0.3	2020-01-14
9326215	110J	2020-01-07 @ 8:00 am	2020-01-10 @ 9:00 am	1.1 ± 0.4	2020-01-14
9326225	110K	2020-01-07 @ 8:00 am	2020-01-10 @ 9:00 am	0.7 ± 0.4	2020-01-14
9325953	111	2020-01-07 @ 6:00 am	2020-01-10 @ 8:00 am	0.6 ± 0.3	2020-01-14
9325968	112	2020-01-07 @ 6:00 am	2020-01-10 @ 8:00 am	< 0.3	2020-01-14
9325947	113A	2020-01-07 @ 6:00 am	2020-01-10 @ 8:00 am	0.7 ± 0.3	2020-01-14
9325960	113B	2020-01-07 @ 6:00 am	2020-01-10 @ 8:00 am	0.6 ± 0.4	2020-01-14
9325952	113C	2020-01-07 @ 6:00 am	2020-01-10 @ 8:00 am	0.6 ± 0.3	2020-01-14
9325970	114	2020-01-07 @ 6:00 am	2020-01-10 @ 8:00 am	0.6 ± 0.3	2020-01-14
9325951	115	2020-01-07 @ 6:00 am	2020-01-10 @ 8:00 am	< 0.3	2020-01-14
9325957	116	2020-01-07 @ 6:00 am	2020-01-10 @ 8:00 am	< 0.3	2020-01-14
9325954	117	2020-01-07 @ 6:00 am	2020-01-10 @ 8:00 am	< 0.3	2020-01-14
9325969	119	2020-01-07 @ 6:00 am	2020-01-10 @ 8:00 am	1.0 ± 0.4	2020-01-14
9326217	131	2020-01-07 @ 7:00 am	2020-01-10 @ 8:00 am	< 0.3	2020-01-14
9326221	132	2020-01-07 @ 7:00 am	2020-01-10 @ 9:00 am	< 0.3	2020-01-14
9326214	133	2020-01-07 @ 7:00 am	2020-01-10 @ 8:00 am	< 0.3	2020-01-14
9326218	134	2020-01-07 @ 7:00 am	2020-01-10 @ 8:00 am	< 0.3	2020-01-14
9326207	136A	2020-01-07 @ 7:00 am	2020-01-10 @ 9:00 am	< 0.3	2020-01-14
9326220	136B	2020-01-07 @ 7:00 am	2020-01-10 @ 9:00 am	< 0.3	2020-01-14
9326201	141E	2020-01-07 @ 7:00 am	2020-01-10 @ 8:00 am	1.1 ± 0.4	2020-01-14
9325946	142	2020-01-07 @ 7:00 am	2020-01-10 @ 8:00 am	1.2 ± 0.3	2020-01-14
9325944	143	2020-01-07 @ 7:00 am	2020-01-10 @ 8:00 am	0.7 ± 0.3	2020-01-14
9325942	145	2020-01-07 @ 7:00 am	2020-01-10 @ 8:00 am	< 0.3	2020-01-14
9325958	146	2020-01-07 @ 7:00 am	2020-01-10 @ 8:00 am	< 0.3	2020-01-14
9325955	147	2020-01-07 @ 7:00 am	2020-01-10 @ 8:00 am	0.5 ± 0.3	2020-01-14
9325941	148	2020-01-07 @ 7:00 am	2020-01-10 @ 8:00 am	0.8 ± 0.3	2020-01-14
9325956	149	2020-01-07 @ 7:00 am	2020-01-10 @ 8:00 am	0.6 ± 0.4	2020-01-14
9326202	150	2020-01-07 @ 7:00 am	2020-01-10 @ 8:00 am	0.6 ± 0.3	2020-01-14
9326204	151	2020-01-07 @ 7:00 am	2020-01-10 @ 8:00 am	0.7 ± 0.3	2020-01-14
9326203	152	2020-01-07 @ 7:00 am	2020-01-10 @ 8:00 am	0.8 ± 0.3	2020-01-14
9326222	CAFETERIA NORTH	2020-01-07 @ 7:00 am	2020-01-10 @ 9:00 am	< 0.3	2020-01-14

January 14, 2020

**** LABORATORY ANALYSIS REPORT ****

Radon test result report for:

**RICHFIELD PUBLIC SCHOOLS
RDLS**

Kit #	Room Id	Started	Ended	pCi/L	Analyzed
9326226	CAFETERIA SOUTH	2020-01-07 @ 7:00 am	2020-01-10 @ 9:00 am	0.6 ± 0.3	2020-01-14
9325948	D-106-1	2020-01-07 @ 7:00 am	2020-01-10 @ 8:00 am	< 0.3	2020-01-14
9325945	D-106-2	2020-01-07 @ 7:00 am	2020-01-10 @ 8:00 am	0.5 ± 0.3	2020-01-14
9325962	D-118-1	2020-01-07 @ 6:00 am	2020-01-10 @ 8:00 am	0.6 ± 0.3	2020-01-14
9325959	D-118-29325959	2020-01-07 @ 6:00 am	2020-01-10 @ 8:00 am	< 0.3	2020-01-14
9325943	D-144-1	2020-01-07 @ 7:00 am	2020-01-10 @ 8:00 am	0.5 ± 0.3	2020-01-14
9325949	D-144-2	2020-01-07 @ 7:00 am	2020-01-10 @ 8:00 am	1.0 ± 0.3	2020-01-14
9326209	F-141E-1	2020-01-07 @ 7:00 am	2020-01-10 @ 8:00 am	< 0.3	2020-01-14
9326205	F-141E-2	2020-01-07 @ 7:00 am	2020-01-10 @ 8:00 am	< 0.3	2020-01-14
9326206	F-141E-3	2020-01-07 @ 7:00 am	2020-01-10 @ 8:00 am	< 0.3	2020-01-14
9326210	GYM NE	2020-01-07 @ 7:00 am	2020-01-10 @ 8:00 am	0.5 ± 0.3	2020-01-14
9326213	GYM NW	2020-01-07 @ 7:00 am	2020-01-10 @ 8:00 am	0.7 ± 0.3	2020-01-14
9326211	GYM SE	2020-01-07 @ 7:00 am	2020-01-10 @ 8:00 am	0.7 ± 0.3	2020-01-14
9326212	GYM SW	2020-01-07 @ 7:00 am	2020-01-10 @ 8:00 am	0.6 ± 0.3	2020-01-14
9326208	KITCHEN	2020-01-07 @ 7:00 am	2020-01-10 @ 9:00 am	0.8 ± 0.4	2020-01-14

Air Chek 1936 Butler Bridge Rd, Mills River, NC 28759-3892 Phone: (828) 684-0893 Fax: (828) 684-8498

Radon test result report for:

**RICHFIELD PUBLIC SCHOOLS
RICHFIELD HIGH SCHOOL**

Kit #	Room Id	Started	Ended	pCi/L	Analyzed
9329570	100 - D1	2020-01-07 @ 8:00 am	2020-01-10 @ 8:00 am	1.3 ± 0.4	2020-01-14
9329574	100 - D2	2020-01-07 @ 8:00 am	2020-01-10 @ 8:00 am	1.4 ± 0.4	2020-01-14
9329502	1007	2020-01-07 @ 6:00 am	2020-01-10 @ 7:00 am	0.9 ± 0.4	2020-01-14
9329577	100A	2020-01-07 @ 8:00 am	2020-01-10 @ 8:00 am	0.6 ± 0.4	2020-01-14
9325977	101 - D1	2020-01-07 @ 10:00 am	2020-01-10 @ 9:00 am	< 0.3	2020-01-14
9325997	101 - D2	2020-01-07 @ 10:00 am	2020-01-10 @ 9:00 am	0.5 ± 0.4	2020-01-14
9329503	1010	2020-01-07 @ 6:00 am	2020-01-10 @ 7:00 am	1.0 ± 0.4	2020-01-14
9329569	102	2020-01-07 @ 8:00 am	2020-01-10 @ 8:00 am	0.6 ± 0.4	2020-01-14
9325987	103	2020-01-07 @ 10:00 am	2020-01-10 @ 9:00 am	< 0.3	2020-01-14
9329544	105	2020-01-07 @ 8:00 am	2020-01-10 @ 8:00 am	0.6 ± 0.4	2020-01-14
9329545	107	2020-01-07 @ 8:00 am	2020-01-10 @ 8:00 am	1.0 ± 0.4	2020-01-14
9329543	107	2020-01-07 @ 8:00 am	2020-01-10 @ 8:00 am	< 0.3	2020-01-14
9329538	108	2020-01-07 @ 8:00 am	2020-01-10 @ 8:00 am	< 0.3	2020-01-14
9329563	109 - D1	2020-01-07 @ 8:00 am	2020-01-10 @ 8:00 am	0.5 ± 0.4	2020-01-14
9329536	109 - D2	2020-01-07 @ 8:00 am	2020-01-10 @ 8:00 am	0.5 ± 0.4	2020-01-14
9329554	111	2020-01-07 @ 8:00 am	2020-01-10 @ 8:00 am	< 0.3	2020-01-14
9329546	112	2020-01-07 @ 8:00 am	2020-01-10 @ 8:00 am	0.7 ± 0.4	2020-01-14
9329557	113	2020-01-07 @ 8:00 am	2020-01-10 @ 8:00 am	0.6 ± 0.4	2020-01-14
9329548	113	2020-01-07 @ 8:00 am	2020-01-10 @ 8:00 am	< 0.3	2020-01-14
9329555	119	2020-01-07 @ 8:00 am	2020-01-10 @ 8:00 am	< 0.3	2020-01-14
9329556	119 KITCHEN	2020-01-07 @ 8:00 am	2020-01-10 @ 8:00 am	< 0.3	2020-01-14
9329549	120 - D1	2020-01-07 @ 8:00 am	2020-01-10 @ 8:00 am	0.8 ± 0.4	2020-01-14
9329550	120 - D2	2020-01-07 @ 8:00 am	2020-01-10 @ 8:00 am	< 0.3	2020-01-14
9329571	127 N	2020-01-07 @ 8:00 am	2020-01-10 @ 8:00 am	1.5 ± 0.4	2020-01-14
9329572	127 S	2020-01-07 @ 8:00 am	2020-01-10 @ 8:00 am	0.9 ± 0.4	2020-01-14
9329559	130	2020-01-07 @ 8:00 am	2020-01-10 @ 8:00 am	< 0.3	2020-01-14
9329578	131	2020-01-07 @ 8:00 am	2020-01-10 @ 8:00 am	< 0.3	2020-01-14
9329579	132	2020-01-07 @ 9:00 am	2020-01-10 @ 8:00 am	< 0.3	2020-01-14
9329580	132	2020-01-07 @ 9:00 am	2020-01-10 @ 8:00 am	< 0.3	2020-01-14
9329582	133 LITTLE OFFICE	2020-01-07 @ 9:00 am	2020-01-10 @ 8:00 am	0.6 ± 0.4	2020-01-14
9329581	133 OFFICE	2020-01-07 @ 9:00 am	2020-01-10 @ 8:00 am	< 0.3	2020-01-14
9329567	134	2020-01-07 @ 9:00 am	2020-01-10 @ 8:00 am	< 0.3	2020-01-14
9329587	134 SMALL OFFICE	2020-01-07 @ 9:00 am	2020-01-10 @ 8:00 am	0.5 ± 0.4	2020-01-14
9329588	134 SMALL STUDIO OFFICE	2020-01-07 @ 9:00 am	2020-01-10 @ 8:00 am	< 0.3	2020-01-14
9329586	134 STUDIO OFFICE	2020-01-07 @ 9:00 am	2020-01-10 @ 8:00 am	< 0.3	2020-01-14
9329568	134A	2020-01-07 @ 9:00 am	2020-01-10 @ 9:00 am	0.7 ± 0.4	2020-01-14
9329589	135	2020-01-07 @ 9:00 am	2020-01-10 @ 8:00 am	< 0.3	2020-01-14

Radon test result report for:**RICHFIELD PUBLIC SCHOOLS
RICHFIELD HIGH SCHOOL**

Kit #	Room Id	Started	Ended	pCi/L	Analyzed
9329590	135 OFFICE	2020-01-07 @ 9:00 am	2020-01-10 @ 8:00 am	< 0.3	2020-01-14
9329585	136 - D1	2020-01-07 @ 9:00 am	2020-01-10 @ 9:00 am	0.9 ± 0.4	2020-01-14
9329593	136 - D2	2020-01-07 @ 9:00 am	2020-01-10 @ 9:00 am	0.6 ± 0.4	2020-01-14
9329597	136 OFFICE	2020-01-07 @ 9:00 am	2020-01-10 @ 9:00 am	< 0.3	2020-01-14
9329595	137	2020-01-07 @ 9:00 am	2020-01-10 @ 9:00 am	< 0.3	2020-01-14
9329594	137 OFFICE	2020-01-07 @ 9:00 am	2020-01-10 @ 9:00 am	< 0.3	2020-01-14
9329596	139	2020-01-07 @ 9:00 am	2020-01-10 @ 9:00 am	< 0.3	2020-01-14
9329575	140	2020-01-07 @ 9:00 am	2020-01-10 @ 9:00 am	0.5 ± 0.4	2020-01-14
9329598	140 OFFICE	2020-01-07 @ 9:00 am	2020-01-10 @ 9:00 am	1.0 ± 0.4	2020-01-14
9329583	141	2020-01-07 @ 9:00 am	2020-01-10 @ 9:00 am	0.6 ± 0.4	2020-01-14
9329576	142	2020-01-07 @ 9:00 am	2020-01-10 @ 9:00 am	< 0.3	2020-01-14
9329599	143	2020-01-07 @ 9:00 am	2020-01-10 @ 9:00 am	< 0.3	2020-01-14
9329600	144	2020-01-07 @ 9:00 am	2020-01-10 @ 9:00 am	< 0.3	2020-01-14
9329584	145	2020-01-07 @ 9:00 am	2020-01-10 @ 9:00 am	< 0.3	2020-01-14
9329591	146	2020-01-07 @ 9:00 am	2020-01-10 @ 9:00 am	0.5 ± 0.4	2020-01-14
9329592	147	2020-01-07 @ 9:00 am	2020-01-10 @ 9:00 am	< 0.3	2020-01-14
9329573	148	2020-01-07 @ 9:00 am	2020-01-10 @ 9:00 am	< 0.3	2020-01-14
9329576	149 - D1	2020-01-07 @ 9:00 am	2020-01-10 @ 9:00 am	< 0.3	2020-01-14
9329584	149 - D2	2020-01-07 @ 9:00 am	2020-01-10 @ 9:00 am	< 0.3	2020-01-14
9329572	159	2020-01-07 @ 9:00 am	2020-01-10 @ 9:00 am	0.6 ± 0.4	2020-01-14
9329588	181 - D1	2020-01-07 @ 9:00 am	2020-01-10 @ 9:00 am	< 0.3	2020-01-14
9329589	181 - D2	2020-01-07 @ 9:00 am	2020-01-10 @ 9:00 am	< 0.3	2020-01-14
9329596	182	2020-01-07 @ 9:00 am	2020-01-10 @ 9:00 am	< 0.3	2020-01-14
9329592	183	2020-01-07 @ 9:00 am	2020-01-10 @ 9:00 am	< 0.3	2020-01-14
9329578	184 AREA	2020-01-07 @ 9:00 am	2020-01-10 @ 9:00 am	< 0.3	2020-01-14
9329591	185	2020-01-07 @ 9:00 am	2020-01-10 @ 9:00 am	< 0.3	2020-01-14
9329571	186 BACK	2020-01-07 @ 9:00 am	2020-01-10 @ 9:00 am	< 0.3	2020-01-14
9329580	186 FRONT	2020-01-07 @ 9:00 am	2020-01-10 @ 9:00 am	< 0.3	2020-01-14
9329575	187	2020-01-07 @ 9:00 am	2020-01-10 @ 9:00 am	< 0.3	2020-01-14
9329583	188 B	2020-01-07 @ 9:00 am	2020-01-10 @ 9:00 am	< 0.3	2020-01-14
9329574	188A - D1	2020-01-07 @ 9:00 am	2020-01-10 @ 9:00 am	< 0.3	2020-01-14
9329579	188A - D2	2020-01-07 @ 9:00 am	2020-01-10 @ 9:00 am	< 0.3	2020-01-14
9329581	203	2020-01-07 @ 10:00 am	2020-01-10 @ 9:00 am	< 0.3	2020-01-14
9326000	211	2020-01-07 @ 10:00 am	2020-01-10 @ 9:00 am	< 0.3	2020-01-14
9325999	222	2020-01-07 @ 10:00 am	2020-01-10 @ 9:00 am	< 0.3	2020-01-14
9325995	244	2020-01-07 @ 10:00 am	2020-01-10 @ 9:00 am	0.6 ± 0.4	2020-01-14
9325994	249	2020-01-07 @ 10:00 am	2020-01-10 @ 9:00 am	< 0.3	2020-01-14

Radon test result report for:**RICHFIELD PUBLIC SCHOOLS
RICHFIELD HIGH SCHOOL**

Kit #	Room Id	Started	Ended	pCi/L	Analyzed
9325998	283	2020-01-07 @ 10:00 am	2020-01-10 @ 9:00 am	< 0.3	2020-01-14
9325985	304	2020-01-07 @ 10:00 am	2020-01-10 @ 9:00 am	< 0.3	2020-01-14
9325986	311	2020-01-07 @ 10:00 am	2020-01-10 @ 9:00 am	< 0.3	2020-01-14
9325982	357	2020-01-07 @ 10:00 am	2020-01-10 @ 9:00 am	< 0.3	2020-01-14
9325990	381	2020-01-07 @ 10:00 am	2020-01-10 @ 9:00 am	< 0.3	2020-01-14
9329547	ATHLETIC STORAGE OFFICE	2020-01-07 @ 8:00 am	2020-01-10 @ 8:00 am	0.5 ± 0.3	2020-01-14
9329564	AUDITORIUM N	2020-01-07 @ 8:00 am	2020-01-10 @ 8:00 am	0.6 ± 0.4	2020-01-14
9329552	AUDITORIUM N FRONT	2020-01-07 @ 8:00 am	2020-01-10 @ 8:00 am	< 0.3	2020-01-14
9329562	AUDITORIUM S	2020-01-07 @ 8:00 am	2020-01-10 @ 8:00 am	0.7 ± 0.4	2020-01-14
9329565	AUDITORIUM S FRONT	2020-01-07 @ 8:00 am	2020-01-10 @ 8:00 am	0.5 ± 0.4	2020-01-14
9329551	AUDITORIUM TICKET BOOTH	2020-01-07 @ 8:00 am	2020-01-10 @ 8:00 am	0.8 ± 0.4	2020-01-14
9329508	BOYS COACH'S OFFICE	2020-01-07 @ 7:00 am	2020-01-10 @ 7:00 am	1.2 ± 0.4	2020-01-14
9329506	BOYS LOCKER ROOM EAST	2020-01-07 @ 7:00 am	2020-01-10 @ 7:00 am	1.1 ± 0.4	2020-01-14
9329505	BOYS LOCKER ROOM WEST	2020-01-07 @ 7:00 am	2020-01-10 @ 7:00 am	1.0 ± 0.4	2020-01-14
9329558	CAFETERIA EAST	2020-01-07 @ 8:00 am	2020-01-10 @ 8:00 am	< 0.3	2020-01-14
9329561	CAFETERIA WEST	2020-01-07 @ 8:00 am	2020-01-10 @ 8:00 am	0.6 ± 0.4	2020-01-14
9329504	CONCESSION	2020-01-07 @ 7:00 am	2020-01-10 @ 8:00 am	< 0.3	2020-01-14
9329609	CUSTODIAL OFFICE - F1	2020-01-07 @ 10:00 am	2020-01-10 @ 9:00 am	< 0.3	2020-01-14
9329610	CUSTODIAL OFFICE - F2	2020-01-07 @ 10:00 am	2020-01-10 @ 9:00 am	< 0.3	2020-01-14
9329604	CUSTODIAL OFFICE - F3	2020-01-07 @ 10:00 am	2020-01-10 @ 9:00 am	< 0.3	2020-01-14
9329521	GIRLS ATHLETIC LOCKER EAST	2020-01-07 @ 7:00 am	2020-01-10 @ 7:00 am	2.4 ± 0.5	2020-01-14
9329522	GIRLS ATHLETIC LOCKER ROOM WEST	2020-01-07 @ 7:00 am	2020-01-10 @ 7:00 am	3.0 ± 0.5	2020-01-14
9329510	GIRLS COACH'S OFFICE	2020-01-07 @ 7:00 am	2020-01-10 @ 7:00 am	1.2 ± 0.4	2020-01-14
9329516	GIRLS LOCKER ROOM EAST	2020-01-07 @ 7:00 am	2020-01-10 @ 7:00 am	1.2 ± 0.4	2020-01-14
9329515	GIRLS LOCKER ROOM WEST - 1D	2020-01-07 @ 7:00 am	2020-01-10 @ 7:00 am	1.2 ± 0.4	2020-01-14
9329509	GIRLS LOCKER ROOM WEST - 2D	2020-01-07 @ 7:00 am	2020-01-10 @ 7:00 am	0.9 ± 0.4	2020-01-14
9329520	GYM - 1	2020-01-07 @ 7:00 am	2020-01-10 @ 7:00 am	< 0.3	2020-01-14
9329529	GYM - 2	2020-01-07 @ 7:00 am	2020-01-10 @ 7:00 am	< 0.3	2020-01-14
9329530	GYM - 3	2020-01-07 @ 7:00 am	2020-01-10 @ 7:00 am	0.6 ± 0.4	2020-01-14
9329531	GYM - 4	2020-01-07 @ 7:00 am	2020-01-10 @ 7:00 am	< 0.3	2020-01-14
9329525	GYM - 5	2020-01-07 @ 7:00 am	2020-01-10 @ 7:00 am	0.6 ± 0.4	2020-01-14
9329532	GYM - 6	2020-01-07 @ 7:00 am	2020-01-10 @ 7:00 am	0.9 ± 0.4	2020-01-14
9329526	GYM - 7	2020-01-07 @ 7:00 am	2020-01-10 @ 8:00 am	0.6 ± 0.4	2020-01-14
9329537	GYM - 8	2020-01-07 @ 7:00 am	2020-01-10 @ 8:00 am	0.8 ± 0.4	2020-01-14
9329535	GYM 5 N	2020-01-07 @ 7:00 am	2020-01-10 @ 8:00 am	0.5 ± 0.4	2020-01-14
9329527	GYM 5 W	2020-01-07 @ 7:00 am	2020-01-10 @ 8:00 am	< 0.3	2020-01-14
9329512	GYM 6 E	2020-01-07 @ 7:00 am	2020-01-10 @ 8:00 am	< 0.3	2020-01-14

Radon test result report for:**RICHFIELD PUBLIC SCHOOLS
RICHFIELD HIGH SCHOOL**

Kit #	Room Id	Started	Ended	pCi/L	Analyzed
9329541	GYM 6 EM	2020-01-07 @ 7:00 am	2020-01-10 @ 8:00 am	< 0.3	2020-01-14
9329542	GYM 6 NW	2020-01-07 @ 7:00 am	2020-01-10 @ 8:00 am	< 0.3	2020-01-14
9329539	GYM 6 W	2020-01-07 @ 7:00 am	2020-01-10 @ 8:00 am	< 0.3	2020-01-14
9329534	GYM 7 N	2020-01-07 @ 7:00 am	2020-01-10 @ 8:00 am	0.6 ± 0.4	2020-01-14
9329540	GYM 7 NM	2020-01-07 @ 7:00 am	2020-01-10 @ 8:00 am	0.7 ± 0.4	2020-01-14
9329533	GYM 7 SM	2020-01-07 @ 7:00 am	2020-01-10 @ 8:00 am	< 0.3	2020-01-14
9329528	GYM NW	2020-01-07 @ 7:00 am	2020-01-10 @ 8:00 am	< 0.3	2020-01-14
9329507	J004	2020-01-07 @ 6:00 am	2020-01-10 @ 7:00 am	1.0 ± 0.4	2020-01-14
9329513	LAUNDRY OFFICE	2020-01-07 @ 7:00 am	2020-01-10 @ 7:00 am	0.8 ± 0.4	2020-01-14
9329514	LAUNDRY ROOM	2020-01-07 @ 7:00 am	2020-01-10 @ 7:00 am	0.6 ± 0.4	2020-01-14
9329573	LIGHT BOOTH	2020-01-07 @ 8:00 am	2020-01-10 @ 8:00 am	1.0 ± 0.4	2020-01-14
9325993	MEDIA CONFERENCE	2020-01-07 @ 10:00 am	2020-01-10 @ 9:00 am	< 0.3	2020-01-14
9329553	OPEN WORK SPACE	2020-01-07 @ 8:00 am	2020-01-10 @ 8:00 am	< 0.3	2020-01-14
9329566	STAGE N	2020-01-07 @ 8:00 am	2020-01-10 @ 8:00 am	< 0.3	2020-01-14
9329560	STAGE S	2020-01-07 @ 8:00 am	2020-01-10 @ 8:00 am	< 0.3	2020-01-14
9329523	WEIGHT ROOM NE	2020-01-07 @ 7:00 am	2020-01-10 @ 7:00 am	0.9 ± 0.4	2020-01-14
9329518	WEIGHT ROOM NW	2020-01-07 @ 7:00 am	2020-01-10 @ 7:00 am	1.0 ± 0.3	2020-01-14
9329517	WEIGHT ROOM SE	2020-01-07 @ 7:00 am	2020-01-10 @ 7:00 am	1.4 ± 0.4	2020-01-14
9329524	WEIGHT ROOM SW	2020-01-07 @ 7:00 am	2020-01-10 @ 7:00 am	0.9 ± 0.4	2020-01-14

Radon test result report for:**RICHFIELD PUBLIC SCHOOLS
RICHFIELD MIDDLE SCHOOL**

Kit #	Room Id	Started	Ended	pCi/L	Analyzed
9325536	100A	2020-01-07 @ 9:00 am	2020-01-10 @ 10:00 am	< 0.3	2020-01-14
9325527	100B	2020-01-07 @ 9:00 am	2020-01-10 @ 10:00 am	< 0.3	2020-01-14
9325510	100C	2020-01-07 @ 11:00 am	2020-01-10 @ 10:00 am	0.7 ± 0.4	2020-01-14
9325580	101	2020-01-07 @ 8:00 am	2020-01-10 @ 9:00 am	0.5 ± 0.3	2020-01-14
9325567	103	2020-01-07 @ 9:00 am	2020-01-10 @ 10:00 am	< 0.3	2020-01-14
9325584	106	2020-01-07 @ 8:00 am	2020-01-10 @ 9:00 am	< 0.3	2020-01-14
9325599	107	2020-01-07 @ 8:00 am	2020-01-10 @ 9:00 am	< 0.3	2020-01-14
9325597	107A	2020-01-07 @ 8:00 am	2020-01-10 @ 9:00 am	< 0.3	2020-01-14
9325528	109	2020-01-07 @ 9:00 am	2020-01-10 @ 10:00 am	< 0.3	2020-01-14
9325529	110A	2020-01-07 @ 9:00 am	2020-01-10 @ 10:00 am	< 0.3	2020-01-14
9325526	110B	2020-01-07 @ 9:00 am	2020-01-10 @ 10:00 am	< 0.3	2020-01-14
9325530	111	2020-01-07 @ 9:00 am	2020-01-10 @ 10:00 am	< 0.3	2020-01-14
9325546	114	2020-01-07 @ 9:00 am	2020-01-10 @ 9:00 am	< 0.3	2020-01-14
9325540	115	2020-01-07 @ 9:00 am	2020-01-10 @ 9:00 am	< 0.3	2020-01-14
9325545	116	2020-01-07 @ 9:00 am	2020-01-10 @ 9:00 am	< 0.3	2020-01-14
9325542	116A	2020-01-07 @ 9:00 am	2020-01-10 @ 9:00 am	< 0.3	2020-01-14
9325539	117	2020-01-07 @ 9:00 am	2020-01-10 @ 9:00 am	< 0.3	2020-01-14
9325547	118	2020-01-07 @ 9:00 am	2020-01-10 @ 9:00 am	< 0.3	2020-01-14
9325520	119	2020-01-07 @ 11:00 am	2020-01-10 @ 11:00 am	< 0.3	2020-01-14
9325548	120	2020-01-07 @ 9:00 am	2020-01-10 @ 9:00 am	< 0.3	2020-01-14
9325537	121	2020-01-07 @ 9:00 am	2020-01-10 @ 9:00 am	0.6 ± 0.4	2020-01-14
9325553	122A	2020-01-07 @ 9:00 am	2020-01-10 @ 9:00 am	< 0.3	2020-01-14
9325549	122B	2020-01-07 @ 9:00 am	2020-01-10 @ 9:00 am	< 0.3	2020-01-14
9325538	123A	2020-01-07 @ 9:00 am	2020-01-10 @ 9:00 am	< 0.3	2020-01-14
9325532	123B	2020-01-07 @ 9:00 am	2020-01-10 @ 9:00 am	< 0.3	2020-01-14
9325533	123C	2020-01-07 @ 9:00 am	2020-01-10 @ 9:00 am	< 0.3	2020-01-14
9325534	123D	2020-01-07 @ 9:00 am	2020-01-10 @ 9:00 am	< 0.3	2020-01-14
9325504	1A	2020-01-07 @ 10:00 am	2020-01-10 @ 10:00 am	< 0.3	2020-01-14
9325506	1A LOCKER ROOM	2020-01-07 @ 10:00 am	2020-01-10 @ 10:00 am	< 0.3	2020-01-14
9325592	2	2020-01-07 @ 11:00 am	2020-01-10 @ 11:00 am	< 0.3	2020-01-14
9325524	206	2020-01-07 @ 10:00 am	2020-01-10 @ 10:00 am	< 0.3	2020-01-14
9325543	212	2020-01-07 @ 10:00 am	2020-01-10 @ 10:00 am	< 0.3	2020-01-14
9325523	227	2020-01-07 @ 10:00 am	2020-01-10 @ 10:00 am	< 0.3	2020-01-14
9325513	2WOMEN'S LOCKER ROOM-2	2020-01-07 @ 10:00 am	2020-01-10 @ 10:00 am	< 0.3	2020-01-14
9325522	301	2020-01-07 @ 10:00 am	2020-01-10 @ 10:00 am	< 0.3	2020-01-14
9325515	314	2020-01-07 @ 10:00 am	2020-01-10 @ 10:00 am	< 0.3	2020-01-14
9325560	97	2020-01-07 @ 9:00 am	2020-01-10 @ 10:00 am	0.6 ± 0.4	2020-01-14

Radon test result report for:**RICHFIELD PUBLIC SCHOOLS
RICHFIELD MIDDLE SCHOOL**

Kit #	Room Id	Started	Ended	pCi/L	Analyzed
9325501	98	2020-01-07 @ 11:00 am	2020-01-10 @ 10:00 am	< 0.3	2020-01-14
9325535	99	2020-01-07 @ 9:00 am	2020-01-10 @ 10:00 am	< 0.3	2020-01-14
9325561	AUDITORIUM COSTUME STORAGE	2020-01-07 @ 8:00 am	2020-01-10 @ 9:00 am	0.6 ± 0.4	2020-01-14
9325550	AUDITORIUM EAST	2020-01-07 @ 9:00 am	2020-01-10 @ 9:00 am	0.6 ± 0.3	2020-01-14
9325557	AUDITORIUM SOUND BOOTH	2020-01-07 @ 9:00 am	2020-01-10 @ 9:00 am	0.6 ± 0.3	2020-01-14
9325555	AUDITORIUM WEST	2020-01-07 @ 9:00 am	2020-01-10 @ 9:00 am	< 0.3	2020-01-14
9325556	BOX OFFICE	2020-01-07 @ 9:00 am	2020-01-10 @ 9:00 am	< 0.3	2020-01-14
9325502	BOYS LOWER LEVEL LOCKER ROOM	2020-01-07 @ 11:00 am	2020-01-10 @ 11:00 am	< 0.3	2020-01-14
9325595	CAFETERIA NW	2020-01-07 @ 8:00 am	2020-01-10 @ 9:00 am	< 0.3	2020-01-14
9325594	CAFETERIA SW	2020-01-07 @ 8:00 am	2020-01-10 @ 9:00 am	< 0.3	2020-01-14
9325562	CARLONDREA HINES OFFICE	2020-01-07 @ 8:00 am	2020-01-10 @ 9:00 am	0.6 ± 0.4	2020-01-14
9325589	CC3	2020-01-07 @ 8:00 am	2020-01-10 @ 9:00 am	< 0.3	2020-01-14
9325582	CUSTODIAL SHOP	2020-01-07 @ 8:00 am	2020-01-10 @ 9:00 am	< 0.3	2020-01-14
9325554	D122-1	2020-01-07 @ 9:00 am	2020-01-10 @ 9:00 am	< 0.3	2020-01-14
9325575	D122-2	2020-01-07 @ 9:00 am	2020-01-10 @ 9:00 am	< 0.3	2020-01-14
9325525	D321-2	2020-01-07 @ 10:00 am	2020-01-10 @ 10:00 am	< 0.3	2020-01-14
9325516	D321B-1	2020-01-07 @ 10:00 am	2020-01-10 @ 10:00 am	< 0.3	2020-01-14
9325514	DWOMEN'S LOCKER ROOM-1	2020-01-07 @ 10:00 am	2020-01-10 @ 10:00 am	< 0.3	2020-01-14
9325544	F227	2020-01-07 @ 10:00 am	2020-01-10 @ 10:00 am	???? TI	2020-01-14
9325586	FCC3	2020-01-07 @ 8:00 am	2020-01-10 @ 9:00 am	< 0.3	2020-01-14
9325578	FKITCHEN OFFICE	2020-01-07 @ 8:00 am	2020-01-10 @ 9:00 am	< 0.3	2020-01-14
9325503	GYM 1 WEST	2020-01-07 @ 11:00 am	2020-01-10 @ 11:00 am	< 0.3	2020-01-14
9325505	GYM 2 EAST	2020-01-07 @ 11:00 am	2020-01-10 @ 11:00 am	< 0.3	2020-01-14
9325507	GYM 2 WEST	2020-01-07 @ 11:00 am	2020-01-10 @ 11:00 am	0.6 ± 0.4	2020-01-14
9325593	K10 DISHWASHING	2020-01-07 @ 8:00 am	2020-01-10 @ 9:00 am	< 0.3	2020-01-14
9325577	K10 SERVING	2020-01-07 @ 8:00 am	2020-01-10 @ 9:00 am	< 0.3	2020-01-14
9325579	KAREN SCOTT OFFICE	2020-01-07 @ 8:00 am	2020-01-10 @ 9:00 am	< 0.3	2020-01-14
9325585	KITCHEN	2020-01-07 @ 8:00 am	2020-01-10 @ 9:00 am	< 0.3	2020-01-14
9325590	KITCHEN OFFICE	2020-01-07 @ 8:00 am	2020-01-10 @ 9:00 am	< 0.3	2020-01-14
9325588	KITCHEN STORAGE	2020-01-07 @ 8:00 am	2020-01-10 @ 9:00 am	< 0.3	2020-01-14
9325517	LOWER LEVEL FITNESS ROOM	2020-01-07 @ 11:00 am	2020-01-10 @ 11:00 am	0.9 ± 0.4	2020-01-14
9325598	MAIN LEVEL GIRLS LOCKER ROOM	2020-01-07 @ 10:00 am	2020-01-10 @ 10:00 am	< 0.3	2020-01-14
9325565	MAIN OFFICE	2020-01-07 @ 8:00 am	2020-01-10 @ 9:00 am	0.6 ± 0.4	2020-01-14
9325564	MAIN OFFICE BREAK ROOM	2020-01-07 @ 8:00 am	2020-01-10 @ 9:00 am	< 0.3	2020-01-14
9325563	MAIN OFFICE CONFERENCE ROOM	2020-01-07 @ 8:00 am	2020-01-10 @ 9:00 am	< 0.3	2020-01-14
9325521	MEN'S LOCKER ROOM	2020-01-07 @ 10:00 am	2020-01-10 @ 10:00 am	< 0.3	2020-01-14
9325587	NORTH SERVING	2020-01-07 @ 8:00 am	2020-01-10 @ 9:00 am	0.8 ± 0.4	2020-01-14

January 14, 2020

**** LABORATORY ANALYSIS REPORT ****

Radon test result report for:

**RICHFIELD PUBLIC SCHOOLS
RICHFIELD MIDDLE SCHOOL**

Kit #	Room Id	Started	Ended	pCi/L	Analyzed
9325511	POOL NE	2020-01-07 @ 10:00 am	2020-01-10 @ 10:00 am	0.6 ± 0.3	2020-01-14
9325568	POOL OFFICE	2020-01-07 @ 10:00 am	2020-01-10 @ 10:00 am	< 0.3	2020-01-14
9325512	POOL SE	2020-01-07 @ 10:00 am	2020-01-10 @ 10:00 am	0.6 ± 0.3	2020-01-14
9325518	POOL SW	2020-01-07 @ 10:00 am	2020-01-10 @ 10:00 am	0.5 ± 0.3	2020-01-14
9325541	PRACTICE ROOM A	2020-01-07 @ 9:00 am	2020-01-10 @ 9:00 am	< 0.3	2020-01-14
9325573	RECORDS	2020-01-07 @ 8:00 am	2020-01-10 @ 9:00 am	0.7 ± 0.4	2020-01-14
9325566	RYAN FINKE OFFICE	2020-01-07 @ 8:00 am	2020-01-10 @ 9:00 am	< 0.3	2020-01-14
9325596	SENSORY ROOM ENTRY	2020-01-07 @ 8:00 am	2020-01-10 @ 9:00 am	< 0.3	2020-01-14
9325569	SHANNON RITT OFFICE	2020-01-07 @ 8:00 am	2020-01-10 @ 9:00 am	0.6 ± 0.4	2020-01-14
9325576	STAGE EAST	2020-01-07 @ 9:00 am	2020-01-10 @ 9:00 am	< 0.3	2020-01-14
9325558	STAGE WEST	2020-01-07 @ 9:00 am	2020-01-10 @ 9:00 am	0.6 ± 0.3	2020-01-14
9325570	STEVEN FLUCAS OFFICE	2020-01-07 @ 8:00 am	2020-01-10 @ 9:00 am	< 0.3	2020-01-14
9325583	STUDENT SERVICE CONFERENCE ROOM	2020-01-07 @ 8:00 am	2020-01-10 @ 9:00 am	0.9 ± 0.4	2020-01-14
9325581	STUDENT SERVICES	2020-01-07 @ 8:00 am	2020-01-10 @ 9:00 am	< 0.3	2020-01-14
9325574	TOBY BERGLUND OFFICE	2020-01-07 @ 8:00 am	2020-01-10 @ 9:00 am	< 0.3	2020-01-14

Air Chek 1936 Butler Bridge Rd, Mills River, NC 28759-3892 Phone: (828) 684-0893 Fax: (828) 684-8498

Radon test result report for:**RICHFIELD PUBLIC SCHOOLS****SHERIDAN HILLS ELEMENTARY SCHOOL**

Kit #	Room Id	Started	Ended	pCi/L	Analyzed
9329117	101	2020-01-07 @ 12:00 pm	2020-01-10 @ 11:00 am	< 0.3	2020-01-14
9329125	102	2020-01-07 @ 12:00 pm	2020-01-10 @ 11:00 am	< 0.3	2020-01-14
9329115	103	2020-01-07 @ 12:00 pm	2020-01-10 @ 11:00 am	< 0.3	2020-01-14
9329144	104	2020-01-07 @ 12:00 pm	2020-01-10 @ 11:00 am	< 0.3	2020-01-14
9329122	105	2020-01-07 @ 12:00 pm	2020-01-10 @ 11:00 am	< 0.3	2020-01-14
9329131	106	2020-01-07 @ 12:00 pm	2020-01-10 @ 11:00 am	< 0.3	2020-01-14
9329129	108	2020-01-07 @ 12:00 pm	2020-01-10 @ 11:00 am	< 0.3	2020-01-14
9329138	109	2020-01-07 @ 12:00 pm	2020-01-10 @ 11:00 am	1.4 ± 0.5	2020-01-14
9329118	110 EAST	2020-01-07 @ 12:00 pm	2020-01-10 @ 11:00 am	0.8 ± 0.4	2020-01-14
9329143	110 WEST	2020-01-07 @ 12:00 pm	2020-01-10 @ 11:00 am	0.7 ± 0.4	2020-01-14
9329139	111	2020-01-07 @ 12:00 pm	2020-01-10 @ 11:00 am	< 0.3	2020-01-14
9329149	112	2020-01-07 @ 12:00 pm	2020-01-10 @ 11:00 am	< 0.3	2020-01-14
9329141	113	2020-01-07 @ 12:00 pm	2020-01-10 @ 11:00 am	0.6 ± 0.4	2020-01-14
9329124	113B	2020-01-07 @ 12:00 pm	2020-01-10 @ 11:00 am	0.7 ± 0.4	2020-01-14
9329147	114	2020-01-07 @ 12:00 pm	2020-01-10 @ 11:00 am	< 0.3	2020-01-14
9329101	115	2020-01-07 @ 12:00 pm	2020-01-10 @ 11:00 am	< 0.3	2020-01-14
9329150	116	2020-01-07 @ 12:00 pm	2020-01-10 @ 11:00 am	< 0.3	2020-01-14
9329142	117	2020-01-07 @ 12:00 pm	2020-01-10 @ 11:00 am	< 0.3	2020-01-14
9329133	118	2020-01-07 @ 12:00 pm	2020-01-10 @ 11:00 am	< 0.3	2020-01-14
9329134	119	2020-01-07 @ 12:00 pm	2020-01-10 @ 11:00 am	< 0.3	2020-01-14
9329135	120	2020-01-07 @ 12:00 pm	2020-01-10 @ 11:00 am	< 0.3	2020-01-14
9329136	121	2020-01-07 @ 12:00 pm	2020-01-10 @ 11:00 am	< 0.3	2020-01-14
9329146	122	2020-01-07 @ 12:00 pm	2020-01-10 @ 11:00 am	< 0.3	2020-01-14
9329126	123	2020-01-07 @ 12:00 pm	2020-01-10 @ 11:00 am	0.5 ± 0.4	2020-01-14
9329140	138	2020-01-07 @ 12:00 pm	2020-01-10 @ 11:00 am	1.5 ± 0.4	2020-01-14
9329123	139	2020-01-07 @ 12:00 pm	2020-01-10 @ 11:00 am	< 0.3	2020-01-14
9329145	139A	2020-01-07 @ 12:00 pm	2020-01-10 @ 11:00 am	< 0.3	2020-01-14
9329148	139B	2020-01-07 @ 12:00 pm	2020-01-10 @ 11:00 am	0.9 ± 0.4	2020-01-14
9329113	140	2020-01-07 @ 12:00 pm	2020-01-10 @ 12:00 pm	1.1 ± 0.4	2020-01-14
9329120	140C	2020-01-07 @ 12:00 pm	2020-01-10 @ 12:00 pm	1.9 ± 0.4	2020-01-14
9329110	141	2020-01-07 @ 12:00 pm	2020-01-10 @ 11:00 am	< 0.3	2020-01-14
9329109	142	2020-01-07 @ 12:00 pm	2020-01-10 @ 12:00 pm	< 0.3	2020-01-14
9329108	143	2020-01-07 @ 12:00 pm	2020-01-10 @ 11:00 am	< 0.3	2020-01-14
9329103	145	2020-01-07 @ 12:00 pm	2020-01-10 @ 12:00 pm	< 0.3	2020-01-14
9329104	146	2020-01-07 @ 12:00 pm	2020-01-10 @ 12:00 pm	0.7 ± 0.4	2020-01-14
9325552	146A	2020-01-07 @ 12:00 pm	2020-01-10 @ 12:00 pm	< 0.3	2020-01-14
9325519	146B	2020-01-07 @ 12:00 pm	2020-01-10 @ 12:00 pm	< 0.3	2020-01-14

Radon test result report for:**RICHFIELD PUBLIC SCHOOLS****SHERIDAN HILLS ELEMENTARY SCHOOL**

Kit #	Room Id	Started	Ended	pCi/L	Analyzed
9325551	147	2020-01-07 @ 12:00 pm	2020-01-10 @ 12:00 pm	< 0.3	2020-01-14
9329121	148	2020-01-07 @ 12:00 pm	2020-01-10 @ 12:00 pm	< 0.3	2020-01-14
9329114	247	2020-01-07 @ 12:00 pm	2020-01-10 @ 12:00 pm	< 0.3	2020-01-14
9329130	CUSTODIAL OFFICE	2020-01-07 @ 12:00 pm	2020-01-10 @ 11:00 am	< 0.3	2020-01-14
9329137	D107-1	2020-01-07 @ 12:00 pm	2020-01-10 @ 11:00 am	1.4 ± 0.4	2020-01-14
9329132	D107-2	2020-01-07 @ 12:00 pm	2020-01-10 @ 11:00 am	1.9 ± 0.5	2020-01-14
9329119	D149-1	2020-01-07 @ 12:00 pm	2020-01-10 @ 12:00 pm	< 0.3	2020-01-14
9325591	D149-2	2020-01-07 @ 12:00 pm	2020-01-10 @ 12:00 pm	< 0.3	2020-01-14
9329105	F139	2020-01-07 @ 1:00 pm	2020-01-10 @ 11:00 am	< 0.3	2020-01-14
9329111	F139A	2020-01-07 @ 1:00 pm	2020-01-10 @ 11:00 am	< 0.3	2020-01-14
9329112	F139B	2020-01-07 @ 1:00 pm	2020-01-10 @ 11:00 am	< 0.3	2020-01-14
9329116	GYMNASIUM NORTH	2020-01-07 @ 12:00 pm	2020-01-10 @ 11:00 am	1.4 ± 0.4	2020-01-14
9329102	GYMNASIUM SOUTH	2020-01-07 @ 12:00 pm	2020-01-10 @ 11:00 am	2.2 ± 0.5	2020-01-14
9329127	KITCHEN	2020-01-07 @ 12:00 pm	2020-01-10 @ 11:00 am	0.6 ± 0.4	2020-01-14
9329128	KITCHEN OFFICE	2020-01-07 @ 12:00 pm	2020-01-10 @ 11:00 am	0.7 ± 0.4	2020-01-14
9329106	MEDIA CENTER OFFICE	2020-01-07 @ 12:00 pm	2020-01-10 @ 12:00 pm	1.1 ± 0.4	2020-01-14

Radon test result report for:**RICHFIELD PUBLIC SCHOOLS
STEM**

Kit #	Room Id	Started	Ended	pCi/L	Analyzed
9326258	100	2020-01-07 @ 9:00 am	2020-01-10 @ 9:00 am	< 0.3	2020-01-14
9326267	101	2020-01-07 @ 9:00 am	2020-01-10 @ 9:00 am	0.5 ± 0.3	2020-01-14
9326268	101B	2020-01-07 @ 9:00 am	2020-01-10 @ 9:00 am	< 0.3	2020-01-14
9326260	102	2020-01-07 @ 9:00 am	2020-01-10 @ 9:00 am	0.6 ± 0.4	2020-01-14
9326247	102A	2020-01-07 @ 9:00 am	2020-01-10 @ 9:00 am	< 0.3	2020-01-14
9326266	102C	2020-01-07 @ 9:00 am	2020-01-10 @ 9:00 am	0.6 ± 0.4	2020-01-14
9326248	102D	2020-01-07 @ 9:00 am	2020-01-10 @ 9:00 am	< 0.3	2020-01-14
9326255	108	2020-01-07 @ 9:00 am	2020-01-10 @ 9:00 am	< 0.3	2020-01-14
9326270	110	2020-01-07 @ 9:00 am	2020-01-10 @ 10:00 am	< 0.3	2020-01-14
9326265	111	2020-01-07 @ 9:00 am	2020-01-10 @ 10:00 am	< 0.3	2020-01-14
9326245	114	2020-01-07 @ 9:00 am	2020-01-10 @ 9:00 am	0.7 ± 0.4	2020-01-14
9326251	116	2020-01-07 @ 9:00 am	2020-01-10 @ 9:00 am	< 0.3	2020-01-14
9326252	117A	2020-01-07 @ 9:00 am	2020-01-10 @ 9:00 am	< 0.3	2020-01-14
9326249	117B	2020-01-07 @ 9:00 am	2020-01-10 @ 9:00 am	< 0.3	2020-01-14
9326253	120	2020-01-07 @ 9:00 am	2020-01-10 @ 9:00 am	< 0.3	2020-01-14
9326232	136	2020-01-07 @ 8:00 am	2020-01-10 @ 9:00 am	< 0.3	2020-01-14
9326231	137	2020-01-07 @ 8:00 am	2020-01-10 @ 9:00 am	< 0.3	2020-01-14
9326229	139J	2020-01-07 @ 8:00 am	2020-01-10 @ 9:00 am	< 0.3	2020-01-14
9326227	140	2020-01-07 @ 8:00 am	2020-01-10 @ 9:00 am	0.7 ± 0.3	2020-01-14
9326228	140D	2020-01-07 @ 8:00 am	2020-01-10 @ 9:00 am	< 0.3	2020-01-14
9326284	214	2020-01-07 @ 10:00 am	2020-01-10 @ 10:00 am	< 0.3	2020-01-14
9326283	217	2020-01-07 @ 10:00 am	2020-01-10 @ 10:00 am	< 0.3	2020-01-14
9326282	226	2020-01-07 @ 10:00 am	2020-01-10 @ 10:00 am	< 0.3	2020-01-14
9326285	301	2020-01-07 @ 10:00 am	2020-01-10 @ 10:00 am	0.6 ± 0.3	2020-01-14
9326279	312	2020-01-07 @ 10:00 am	2020-01-10 @ 10:00 am	< 0.3	2020-01-14
9326280	318	2020-01-07 @ 10:00 am	2020-01-10 @ 10:00 am	< 0.3	2020-01-14
9326246	BAND OFFICE NORTH	2020-01-07 @ 9:00 am	2020-01-10 @ 9:00 am	< 0.3	2020-01-14
9326241	BAND OFFICE SOUTH	2020-01-07 @ 9:00 am	2020-01-10 @ 9:00 am	< 0.3	2020-01-14
9326223	CAFETERIA 8	2020-01-07 @ 8:00 am	2020-01-10 @ 9:00 am	< 0.3	2020-01-14
9326235	CAFETERIA 1	2020-01-07 @ 8:00 am	2020-01-10 @ 9:00 am	< 0.3	2020-01-14
9326236	CAFETERIA 2	2020-01-07 @ 8:00 am	2020-01-10 @ 9:00 am	0.7 ± 0.3	2020-01-14
9326234	CAFETERIA 3	2020-01-07 @ 8:00 am	2020-01-10 @ 9:00 am	< 0.3	2020-01-14
9326216	CAFETERIA 4	2020-01-07 @ 8:00 am	2020-01-10 @ 9:00 am	< 0.3	2020-01-14
9326237	CAFETERIA 5	2020-01-07 @ 8:00 am	2020-01-10 @ 9:00 am	< 0.3	2020-01-14
9326238	CAFETERIA 6	2020-01-07 @ 8:00 am	2020-01-10 @ 9:00 am	< 0.3	2020-01-14
9326242	CAFETERIA 7	2020-01-07 @ 8:00 am	2020-01-10 @ 9:00 am	< 0.3	2020-01-14
9326254	COAT ROOM	2020-01-07 @ 9:00 am	2020-01-10 @ 9:00 am	< 0.3	2020-01-14

Radon test result report for:**RICHFIELD PUBLIC SCHOOLS
STEM**

Kit #	Room Id	Started	Ended	pCi/L	Analyzed
9326256	COPY ROOM	2020-01-07 @ 9:00 am	2020-01-10 @ 9:00 am	< 0.3	2020-01-14
9326261	D-102B-1	2020-01-07 @ 9:00 am	2020-01-10 @ 9:00 am	< 0.3	2020-01-14
9326262	D-102B-2	2020-01-07 @ 9:00 am	2020-01-10 @ 9:00 am	< 0.3	2020-01-14
9326257	D-109-1	2020-01-07 @ 9:00 am	2020-01-10 @ 10:00 am	< 0.3	2020-01-14
9326269	D-109-2	2020-01-07 @ 9:00 am	2020-01-10 @ 10:00 am	0.5 ± 0.4	2020-01-14
9326250	D-127-1	2020-01-07 @ 9:00 am	2020-01-10 @ 9:00 am	0.7 ± 0.3	2020-01-14
9326239	D-127-2	2020-01-07 @ 9:00 am	2020-01-10 @ 9:00 am	0.6 ± 0.4	2020-01-14
9326278	D-232-1	2020-01-07 @ 10:00 am	2020-01-10 @ 10:00 am	1.0 ± 0.4	2020-01-14
9326277	D-232-1	2020-01-07 @ 10:00 am	2020-01-10 @ 10:00 am	0.7 ± 0.4	2020-01-14
9326233	DISH ROOM	2020-01-07 @ 8:00 am	2020-01-10 @ 9:00 am	< 0.3	2020-01-14
9326288	F-140-1	2020-01-07 @ 10:00 am	2020-01-10 @ 10:00 am	< 0.3	2020-01-14
9326289	F-140-2	2020-01-07 @ 10:00 am	2020-01-10 @ 10:00 am	< 0.3	2020-01-14
9326290	F-140-3	2020-01-07 @ 10:00 am	2020-01-10 @ 10:00 am	< 0.3	2020-01-14
9326263	GYM 1	2020-01-07 @ 9:00 am	2020-01-10 @ 10:00 am	< 0.3	2020-01-14
9326264	GYM 2	2020-01-07 @ 9:00 am	2020-01-10 @ 10:00 am	0.9 ± 0.4	2020-01-14
9326271	GYM 3	2020-01-07 @ 10:00 am	2020-01-10 @ 10:00 am	< 0.3	2020-01-14
9326272	GYM 4	2020-01-07 @ 10:00 am	2020-01-10 @ 10:00 am	0.6 ± 0.4	2020-01-14
9326273	GYM 5	2020-01-07 @ 10:00 am	2020-01-10 @ 10:00 am	< 0.3	2020-01-14
9326274	GYM 6	2020-01-07 @ 10:00 am	2020-01-10 @ 10:00 am	< 0.3	2020-01-14
9326275	GYM 7	2020-01-07 @ 10:00 am	2020-01-10 @ 10:00 am	0.5 ± 0.3	2020-01-14
9326276	GYM 8	2020-01-07 @ 10:00 am	2020-01-10 @ 10:00 am	< 0.3	2020-01-14
9326224	KITCHEN	2020-01-07 @ 8:00 am	2020-01-10 @ 9:00 am	< 0.3	2020-01-14
9326244	KITCHEN BREAK ROOM	2020-01-07 @ 8:00 am	2020-01-10 @ 9:00 am	< 0.3	2020-01-14
9326230	KITCHEN SERVING NORTH	2020-01-07 @ 8:00 am	2020-01-10 @ 9:00 am	< 0.3	2020-01-14
9326243	KITCHEN SERVING SOUTH	2020-01-07 @ 8:00 am	2020-01-10 @ 9:00 am	< 0.3	2020-01-14
9326259	MAILROOM	2020-01-07 @ 9:00 am	2020-01-10 @ 9:00 am	< 0.3	2020-01-14
9326281	NURSES OFFICE	2020-01-07 @ 10:00 am	2020-01-10 @ 10:00 am	< 0.3	2020-01-14
9326240	OFFICE	2020-01-07 @ 9:00 am	2020-01-10 @ 9:00 am	< 0.3	2020-01-14

January 14, 2020

**** LABORATORY ANALYSIS REPORT ****

Radon test result report for:

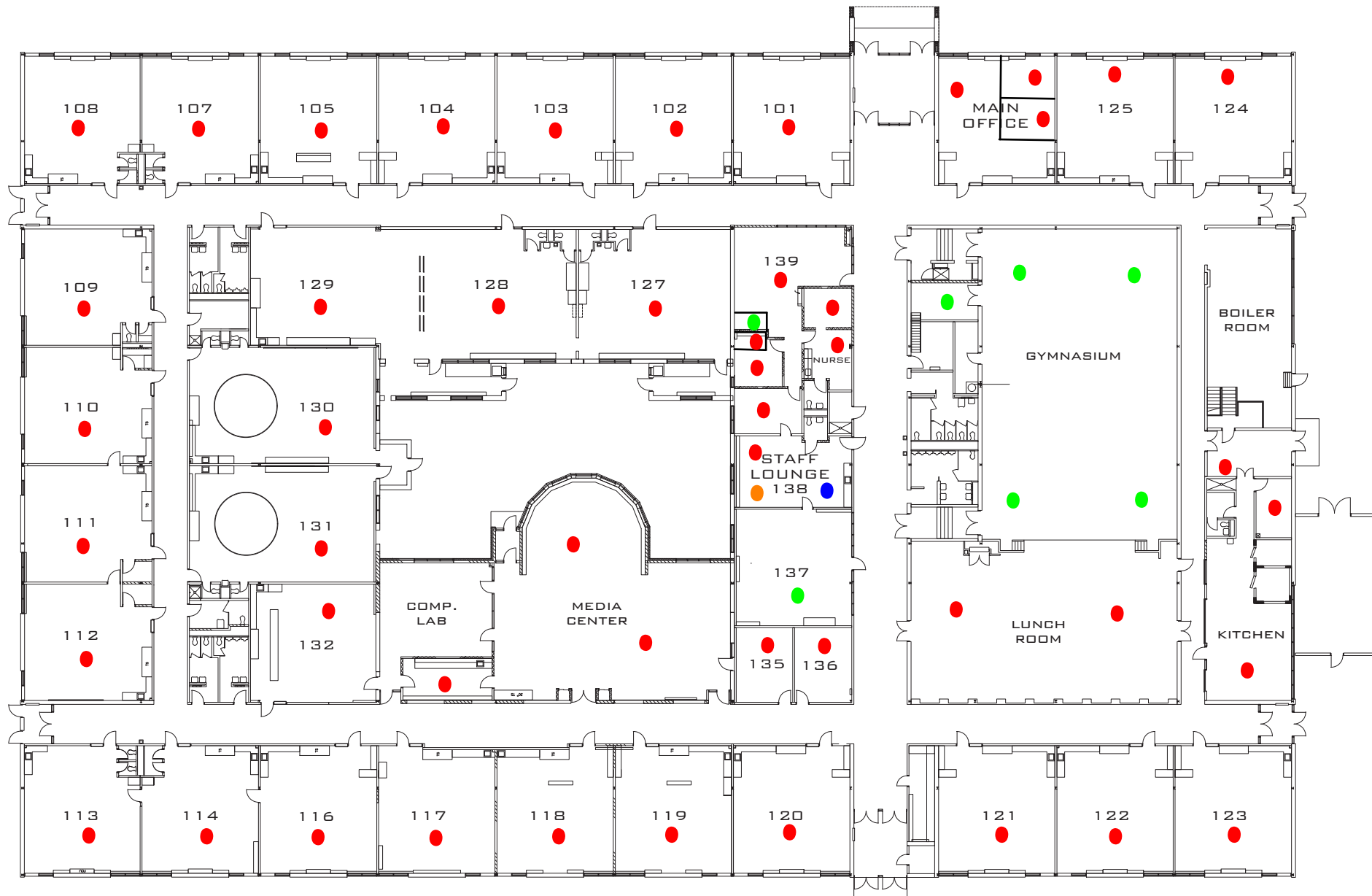
**RICHFIELD PUBLIC SCHOOLS
TRANSPORTATION OFFICE**

Kit #	Room Id	Started	Ended	pCi/L	Analyzed
9329652	BREAK ROOM	2020-01-07 @ 12:00 pm	2020-01-10 @ 11:00 am	1.3 ± 0.4	2020-01-14
9329653	BREAK ROOM - F1	2020-01-07 @ 12:00 pm	2020-01-10 @ 11:00 am	< 0.3	2020-01-14
9329661	BREAK ROOM - F2	2020-01-07 @ 12:00 pm	2020-01-10 @ 11:00 am	< 0.3	2020-01-14
9329651	DAN'S OFFICE	2020-01-07 @ 12:00 pm	2020-01-10 @ 11:00 am	1.8 ± 0.4	2020-01-14
9329660	MAINTENANCE SHOP	2020-01-07 @ 12:00 pm	2020-01-10 @ 11:00 am	1.9 ± 0.4	2020-01-14
9329644	OFFICE	2020-01-07 @ 12:00 pm	2020-01-10 @ 11:00 am	1.5 ± 0.4	2020-01-14
9329669	TRANSPORTATION OTHER BUILDING	2020-01-07 @ 12:00 pm	2020-01-10 @ 11:00 am	< 0.3	2020-01-14

Air Chek 1936 Butler Bridge Rd, Mills River, NC 28759-3892 Phone: (828) 684-0893 Fax: (828) 684-8498

LEGEND

- Radon Detector (<4.0 pCi/L)
- Duplicate Sample
- Field Blank Sample
- Missing Sample



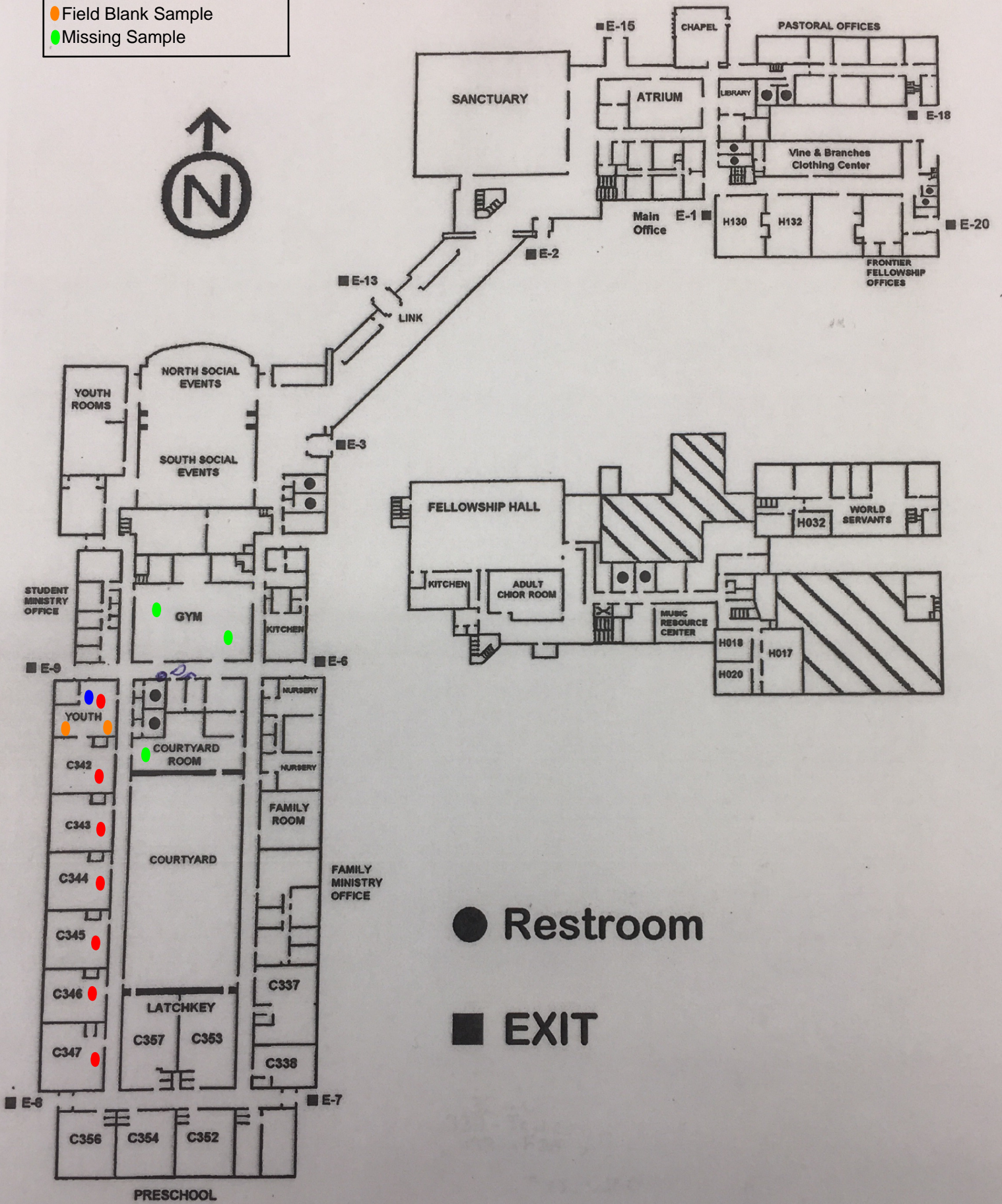
LEGEND

- Radon Detector (<4.0 pCi/L)
- Duplicate Sample
- Field Blank Sample
- Missing Sample



LEGEND

- Radon Detector (<4.0 pCi/L)
- Duplicate Sample
- Field Blank Sample
- Missing Sample



LEGEND

- Radon Detector (<4.0 pCi/L)
- Duplicate Sample
- Field Blank Sample
- Missing Sample

AED LOCATION



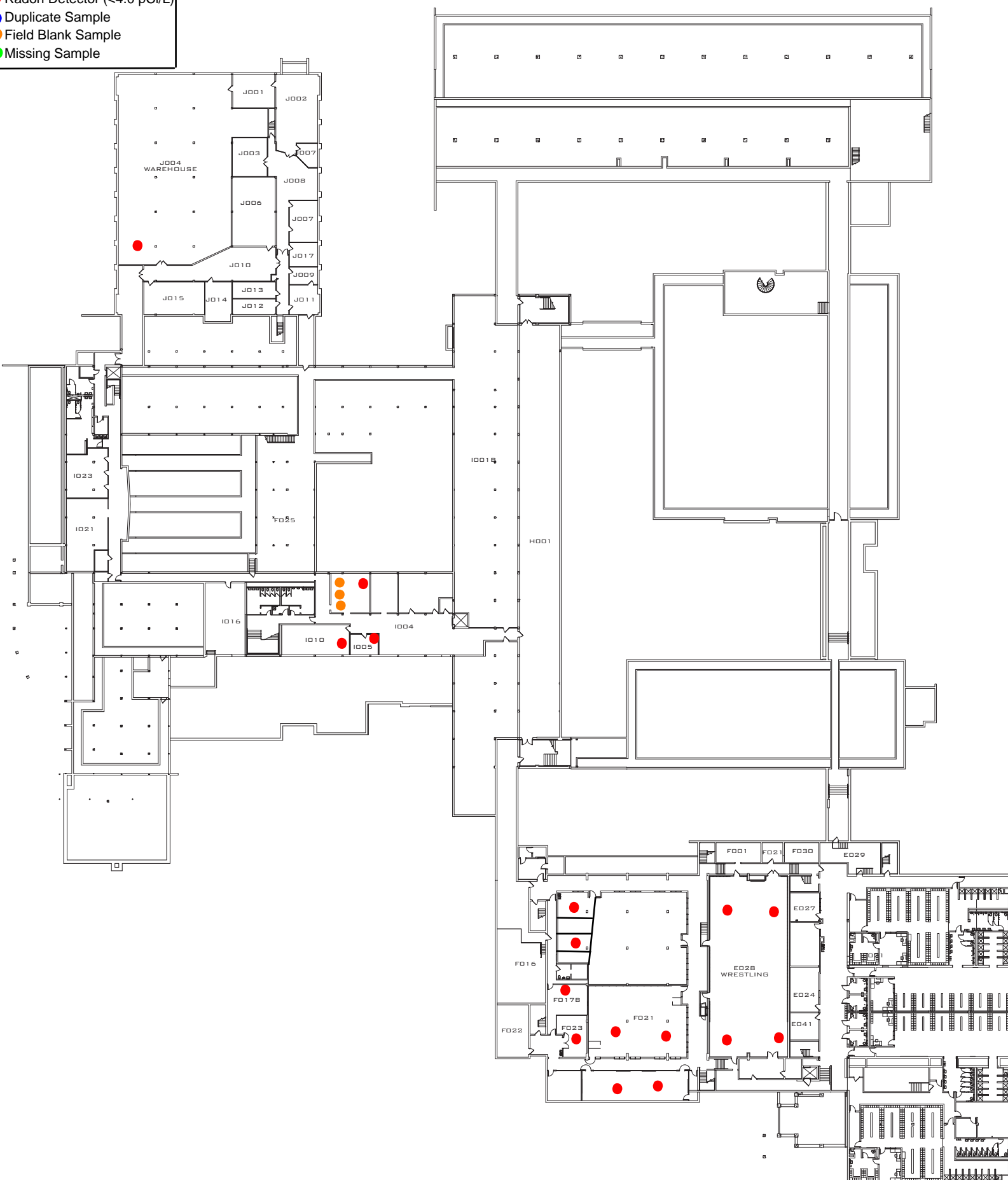
LEGEND

- Radon Detector (<4.0 pCi/L)
- Duplicate Sample
- Field Blank Sample
- Missing Sample



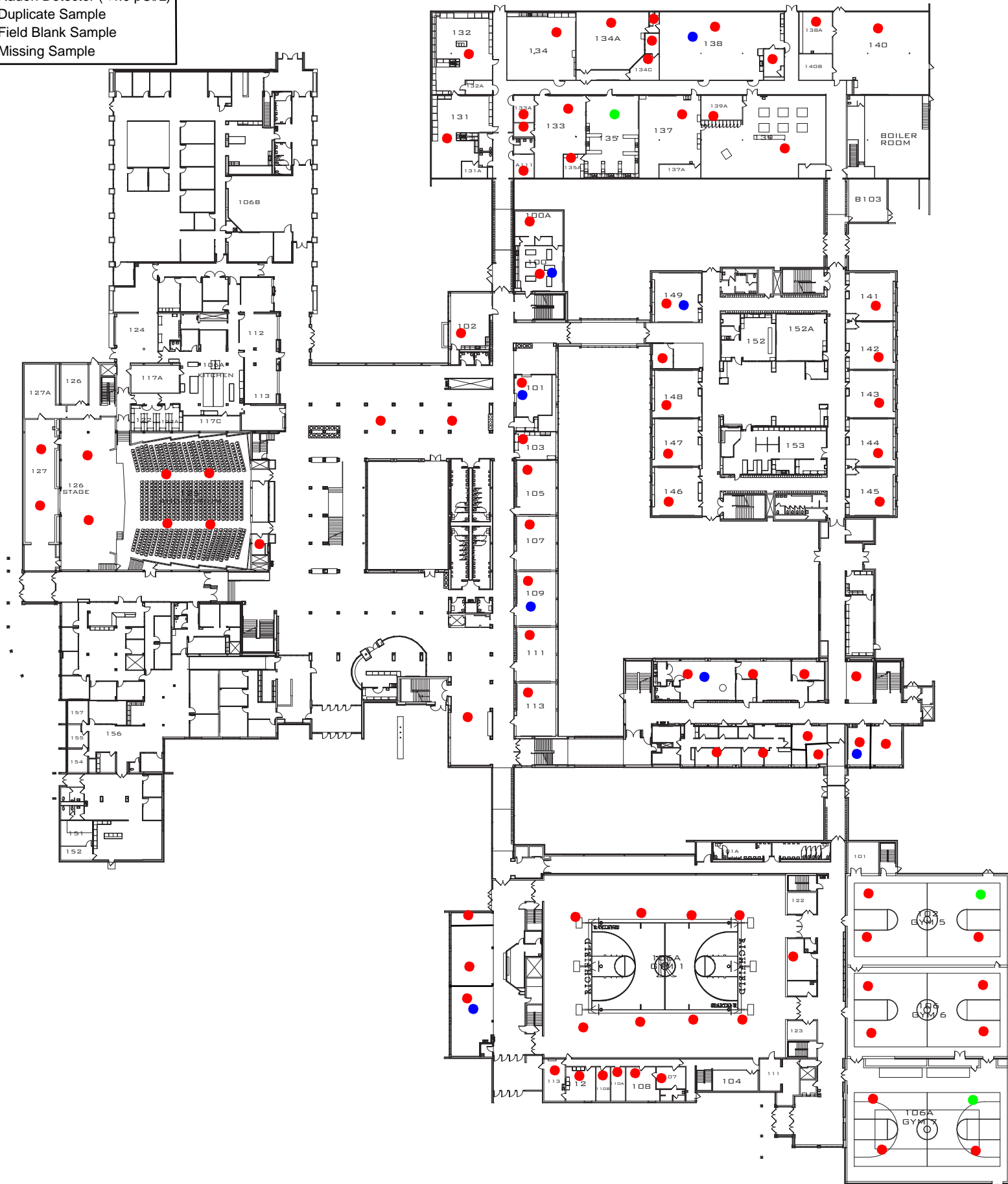
LEGEND

- Radon Detector (<4.0 pCi/L)
- Duplicate Sample
- Field Blank Sample
- Missing Sample



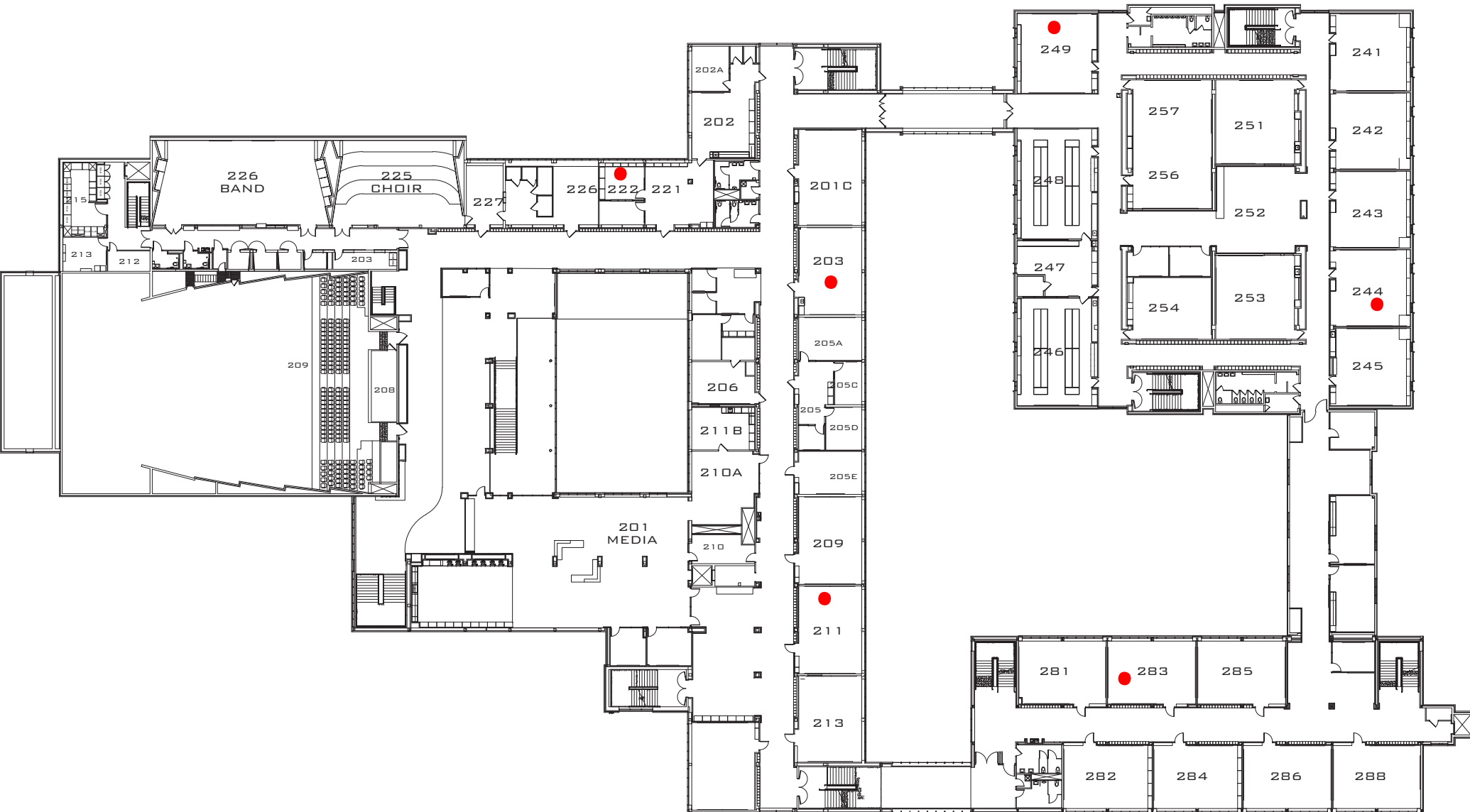
LEGEND

- Radon Detector (<4.0 pCi/L)
- Duplicate Sample
- Field Blank Sample
- Missing Sample



LEGEND

- Radon Detector (<4.0 pCi/L)
- Duplicate Sample
- Field Blank Sample
- Missing Sample



LEGEND

- Radon Detector (<4.0 pCi/L)
- Duplicate Sample
- Field Blank Sample
- Missing Sample



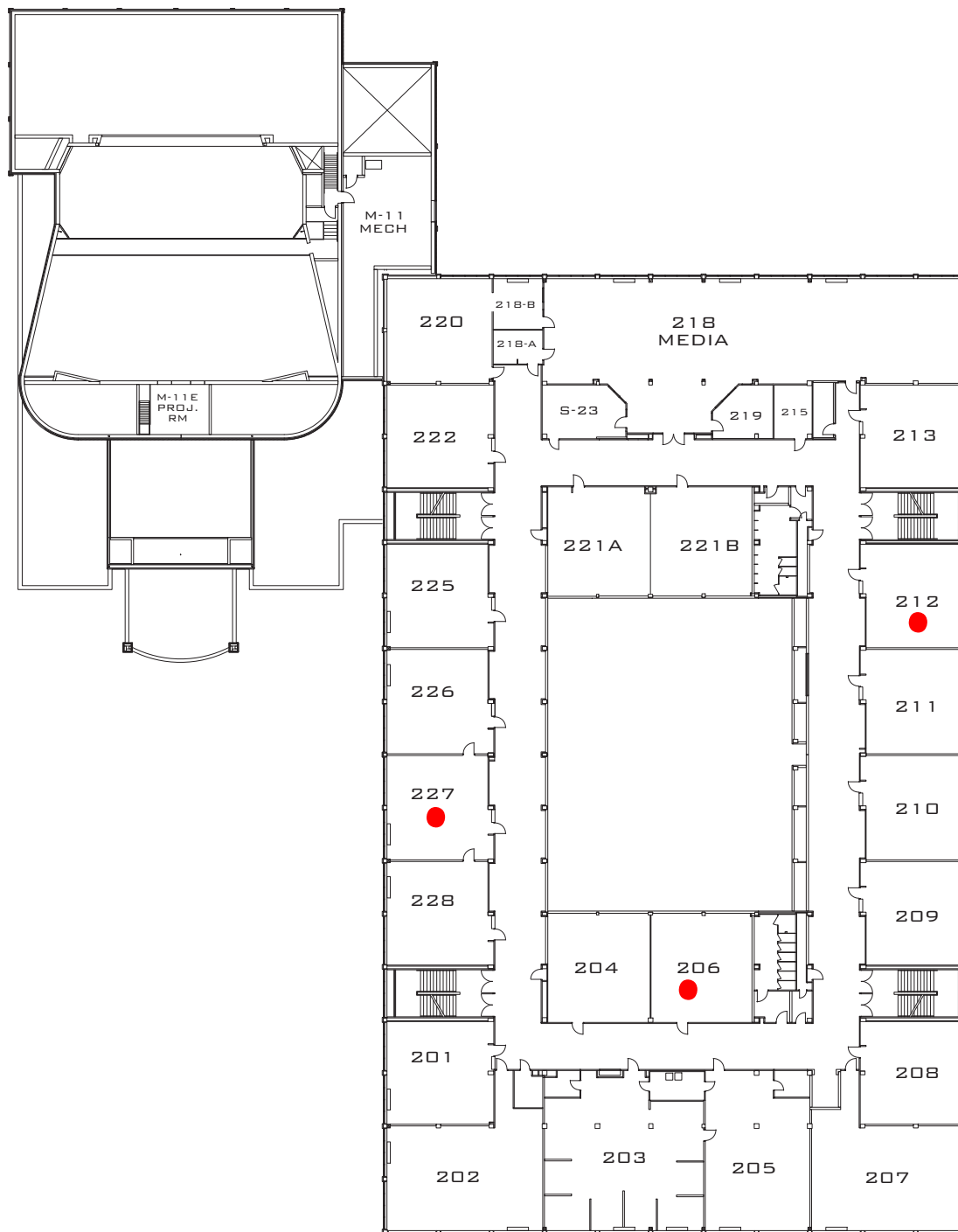
LEGEND

- Radon Detector (<4.0 pCi/L)
- Duplicate Sample
- Field Blank Sample
- Missing Sample



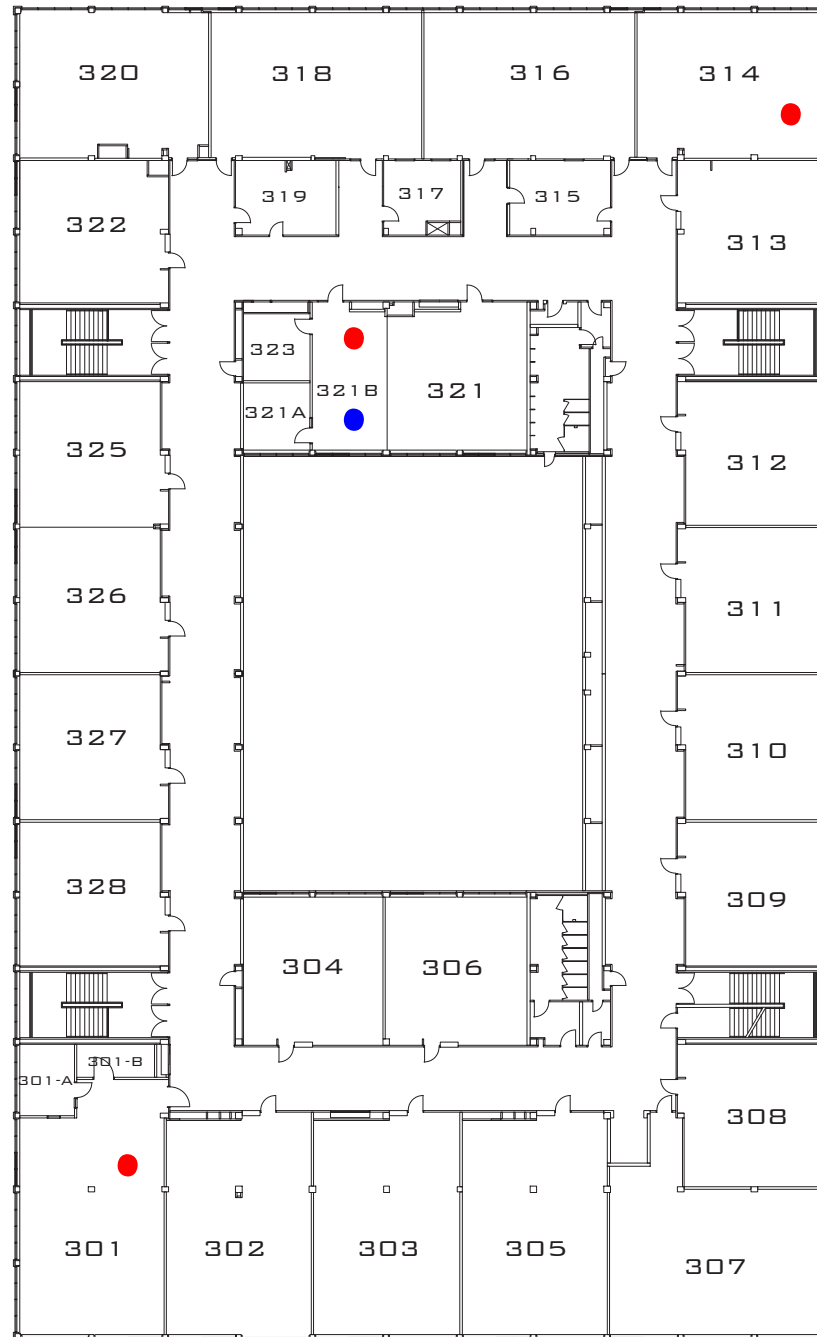
LEGEND

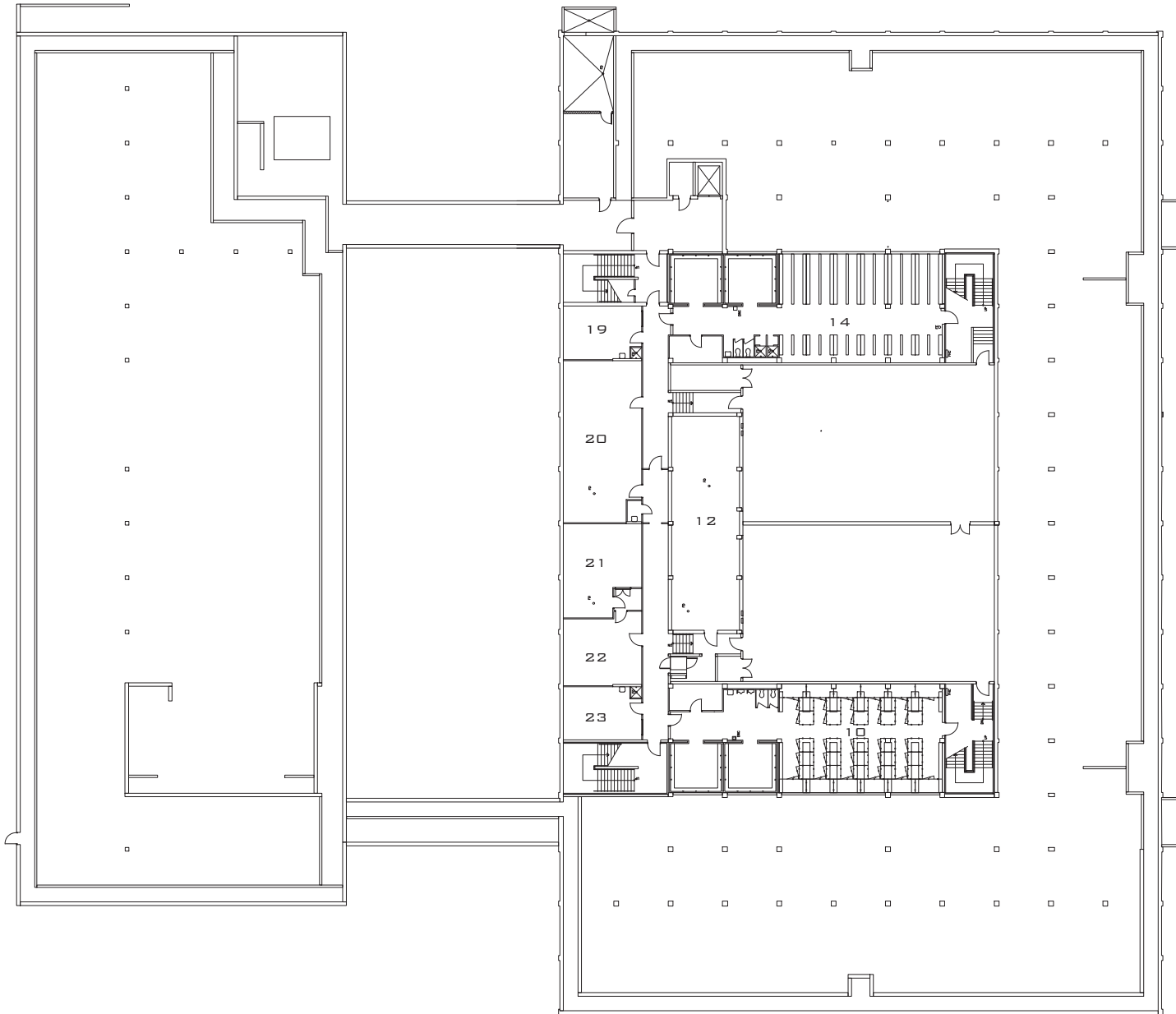
- Radon Detector (<4.0 pCi/L)
- Duplicate Sample
- Field Blank Sample
- Missing Sample



LEGEND

- Radon Detector (<4.0 pCi/L)
- Duplicate Sample
- Field Blank Sample
- Missing Sample



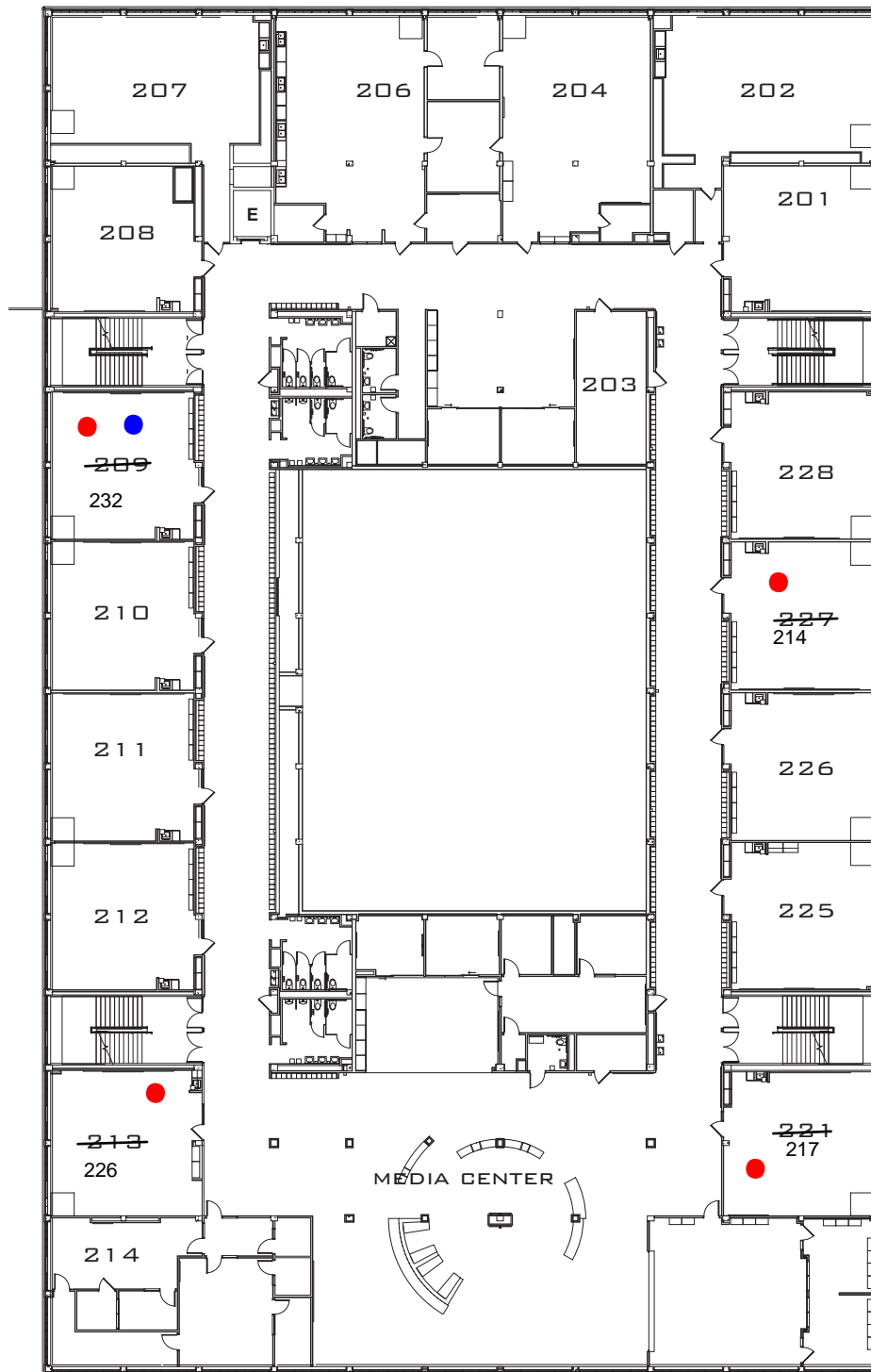


- LEGEND**
- Radon Detector (<4.0 pCi/L)
 - Duplicate Sample
 - Field Blank Sample
 - Missing Sample



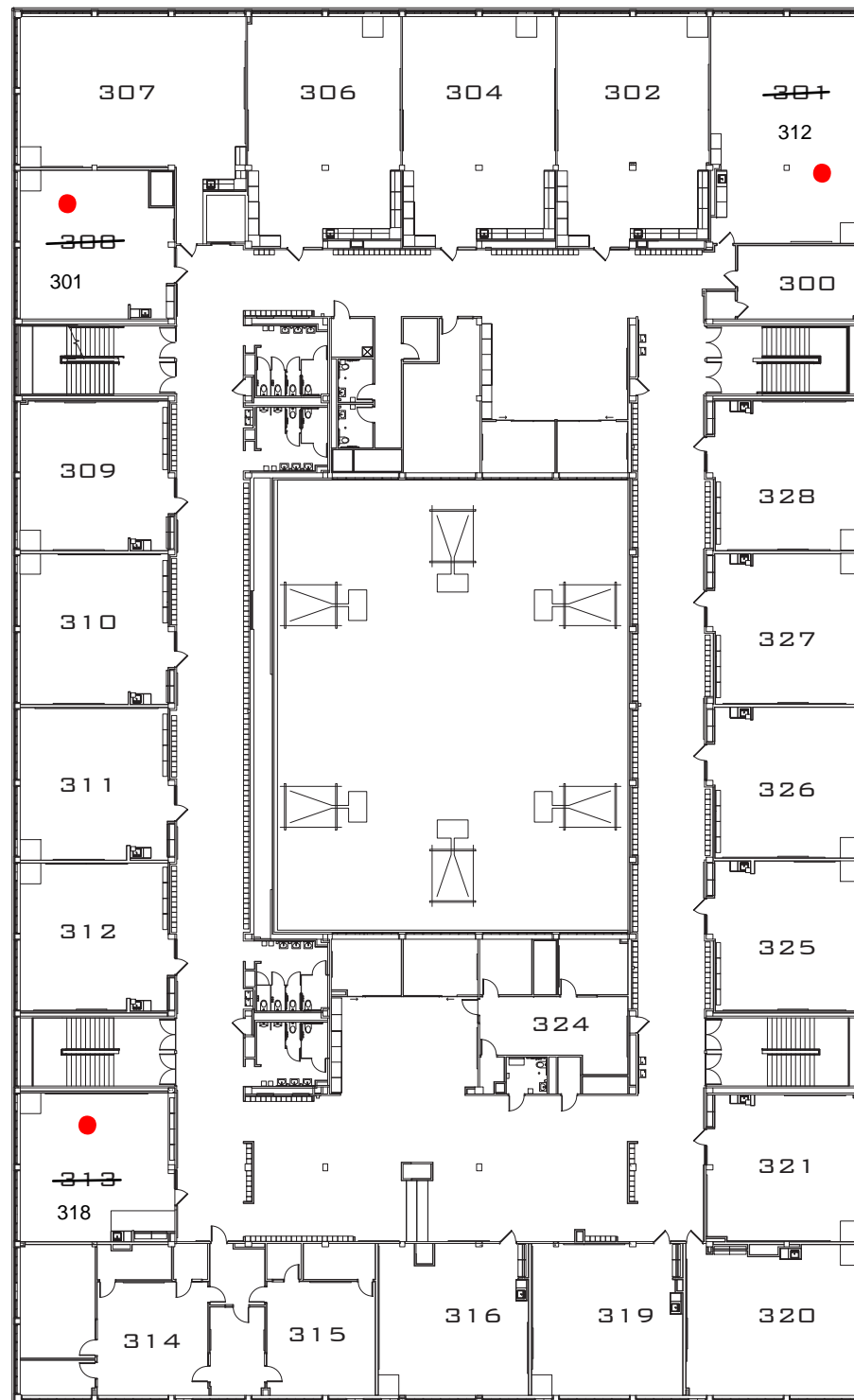
LEGEND

- Radon Detector (<4.0 pCi/L)
- Duplicate Sample
- Field Blank Sample
- Missing Sample



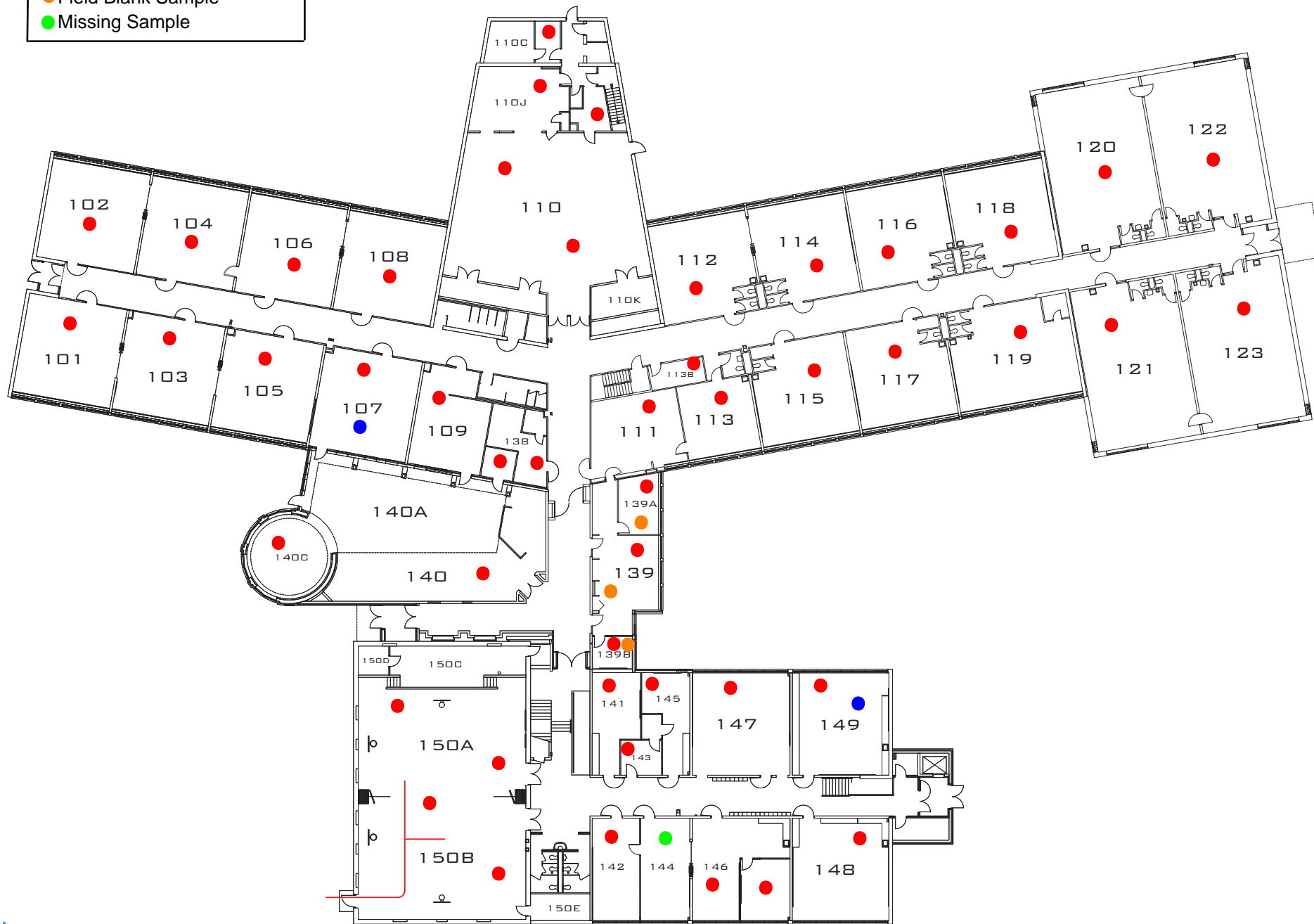
LEGEND

- Radon Detector (<4.0 pCi/L)
- Duplicate Sample
- Field Blank Sample
- Missing Sample



LEGEND

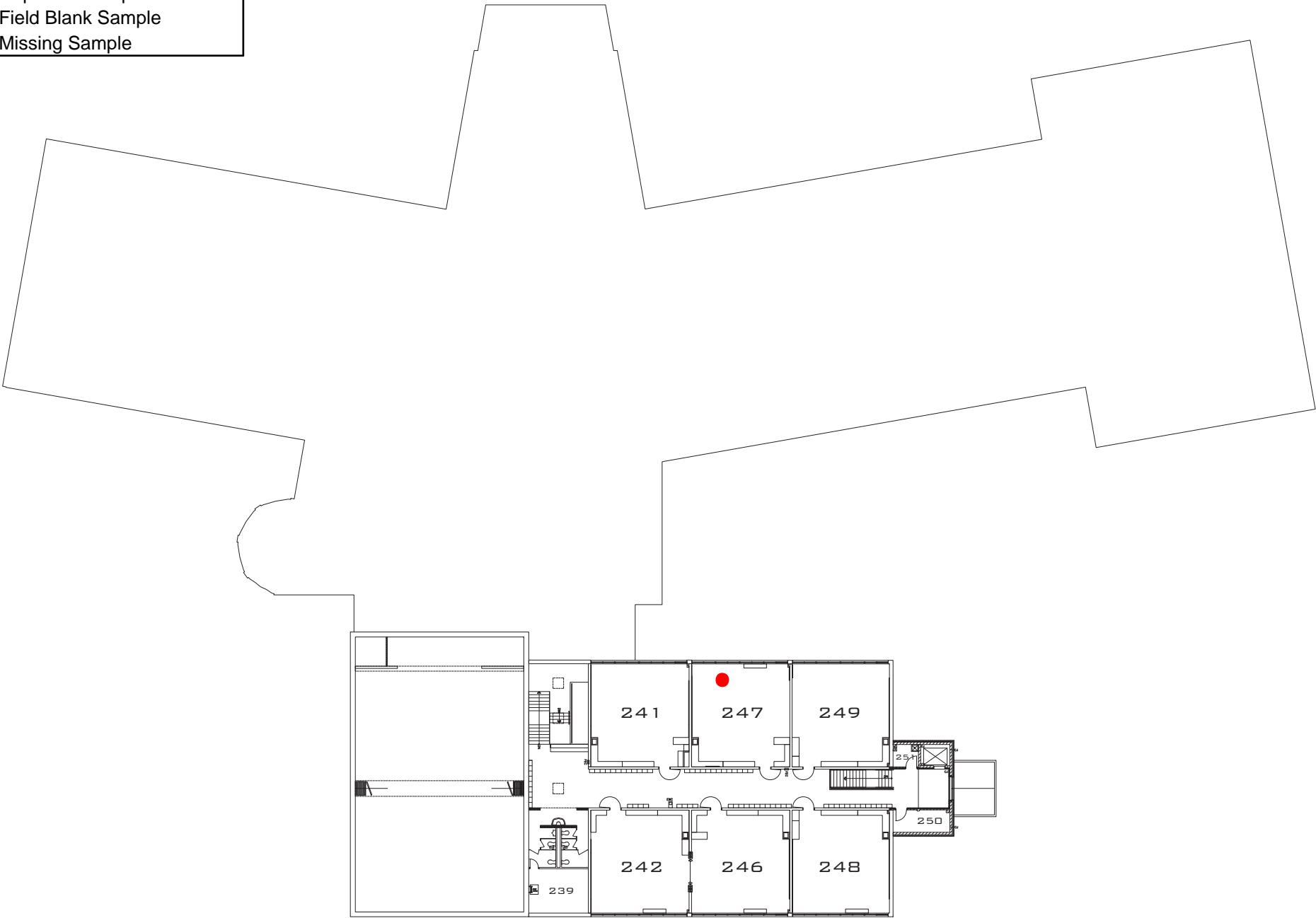
- Radon Detector (<4.0 pCi/L)
- Duplicate Sample
- Field Blank Sample
- Missing Sample



LEGEND

- Radon Detector (<4.0 pCi/L)
- Duplicate Sample
- Field Blank Sample
- Missing Sample

AED LOCATION



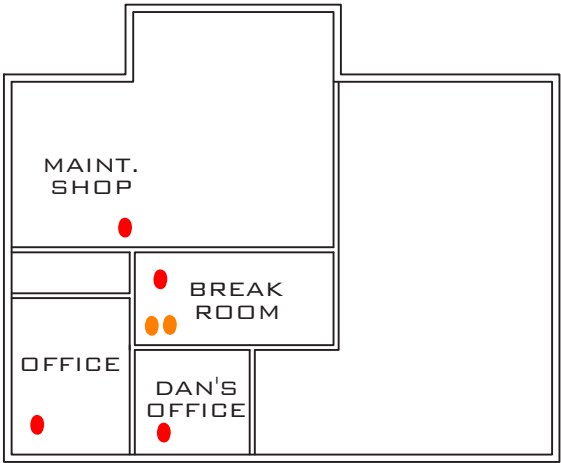
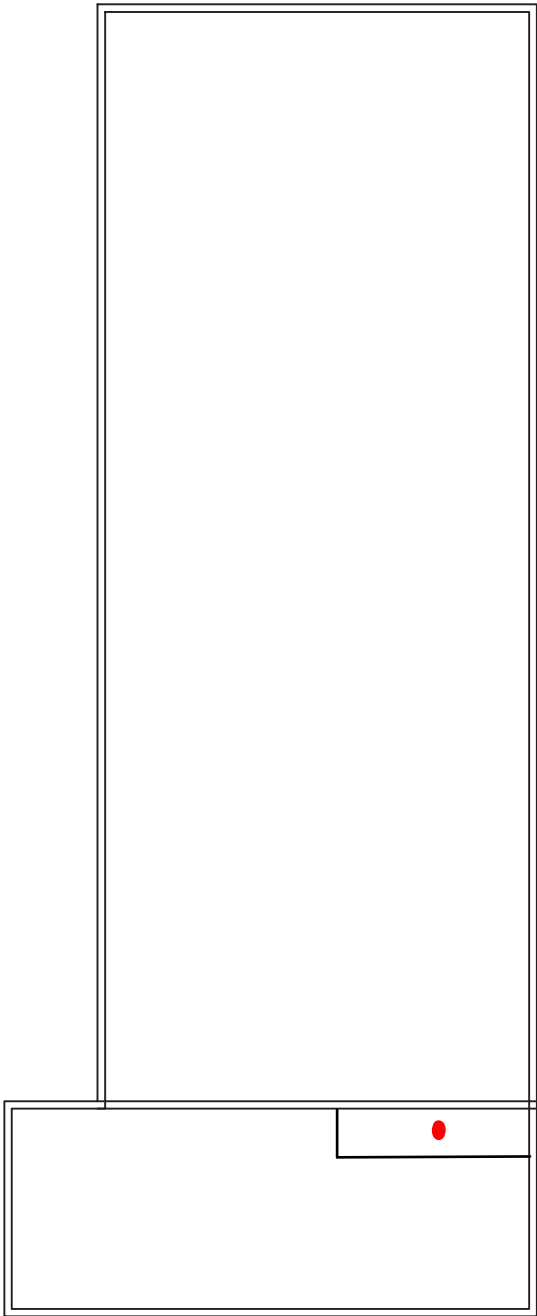
Legend

● Radon Detector (<4.0 pCi/L)

● Duplicate Sample

● Field Blank Sample

● Missing Sample



Chain-of-Custody Cover Page

IEA, Inc.

9201 West Broadway, Suite 600
Brooklyn Park, MN 55445
763-315-7900



Device Type (circle)

Radtrak²

Pro Chek

CRM

Project Number

20191129
RICHFIELD PUBLIC
SCHOOLS
CENTENNIAL
ELEMENTARY

District:

Address:

7315

Building:

State, City, Zip

BLOOMINGTON AVES
RICHFIELD, MN 55423

Project Manager:

DANIEL HOLCOMB

Date Disbursed:

1/7/2020

Time:

1 PM

Disbursing
Measurement

Professional Name:

Kennedy Peterson

Signature:

KEUMR

Date Retrieved:

1/10/2020

Time Retrieved:

12 PM

Retrieving
Measurement
Professional Name:

Kennedy
Peterson

Signature:

KEUMR

Date sent to Analytical
Lab:

1/10/2020

Time:

2 PM

Tracking Number:

Date Lab
Received:
Received
by:

Chain-of-Custody Cover Page



IEA, Inc.
9201 West Broadway, Suite 600
Brooklyn Park, MN 55445
763-315-7900

Device Type (circle)

Radtrak²

Pro Chek

CRM

Project Number

201911129

District:

RICHFIELD

Address:

7145 Harriet Ave

Building:

Central Education

State, City, Zip

RICHFIELD, MN 55423

Project Manager:

Daniel Holcomb

Date Disbursed:

01/07/2020

Time:

10:45 AM

Disbursing
Measurement

Professional Name:

IAN O'Rourke

Signature:

Clara J.

Date Retrieved:

01/10/2020

Time Retrieved:

10:00 AM

Retrieving
Measurement

Professional Name:

IAN O'Rourke

Signature:

Clara J.

Date sent to Analytical
Lab:

Time:

Tracking Number:

Date Lab
Received:
Received
by:

Chain-of-Custody Cover Page

**IEA, Inc.**

9201 West Broadway, Suite 600
Brooklyn Park, MN 55445
763-315-7900

Device Type (circle)Radtrak²

Pro Chek

CRM

Project Number

20A11129

District:

Richfield

Address:

7132 Portland Ave.

Building:

Hope Church

State, City, Zip

Minneapolis, MN 55423

Project Manager:

Daniel Holcomb

Date Disbursed:

1/7/20

Time:

1015 am

**Disbursing
Measurement****Professional Name:**

Abe Dickinsen

Signature:**Date Retrieved:**

1/10/20

Time Retrieved:

1000 am

**Retrieving
Measurement****Professional Name:**

Abe Dickinsen

Signature:**Date sent to Analytical
Lab:**

1/10/20

Time:

400 pm

Tracking Number:**Date Lab
Received:
Received
by:**

Chain-of-Custody Cover Page



IEA, Inc.
9201 West Broadway, Suite 600
Brooklyn Park, MN 55445
763-315-7900

Device Type (circle)

Radtrak²

Pro Chok

CRM

Project Number

20191129

District:

Richfield

Address:

7001 Elliot Ave. S.

Building:

RDL5

State, City, Zip

Richfield, MN 55423

Project Manager:

Daniel Holcomb

Date Disbursed:

~~1/7/20~~ 1/7/20

Time:

600 am

Disbursing
Measurement

Professional Name:

Abe Dickinson

Signature:

Abe Dickinson

Date Retrieved:

~~1/7/20~~ 1/10/20

Time Retrieved:

730 am

Retrieving
Measurement

Professional Name:

Abe Dickinson

Signature:

Abe Dickinson

Date sent to Analytical
Lab:

1/10/20

Time:

400 pm

Tracking Number:

Date Lab
Received:
Received
by:

Chain-of-Custody Cover Page



IEA, Inc.

9201 West Broadway, Suite 600
Brooklyn Park, MN 55445
763-315-7900

Device Type (circle)

Radtrak²

Pro Chek

CRM

Project Number

20191129

District:

Richfield

Address:

7001 Harriet Ave.

Building:

Richfield High School

State, City, Zip

Richfield, MN 55423

Project Manager:

Daniel Holcomb

Date Disbursed:

01/07/2020

Time:

6:37 AM

Disbursing
Measurement

Professional Name:

IAN Dickhansen

Signature:

[Signature]

Date Retrieved:

01/10/2020

Time Retrieved:

6:50 AM

Retrieving
Measurement

Professional Name:

IAN Dickhansen

Signature:

[Signature]

Date sent to Analytical
Lab:

Time:

Tracking Number:

Date Lab
Received:
Received
by:

Chain-of-Custody Cover Page



IEA, Inc.

9201 West Broadway, Suite 600
Brooklyn Park, MN 55445
763-315-7900

Device Type (circle)

Radtrak²

☒ Pro Chek

☐ CRM

Project Number

201911129
RICHFIELD PUBLIC
SCHOOLS

District:

Address:

7461 OLIVER Ave S

Building:

RICHFIELD MIDDLE
SCHOOL

State, City, Zip

RICHFIELD, MN
55423

Project Manager:

DANIEL HOLCOMB

Date Disbursed:

1/7/2020

Time:

7:30 AM

Disbursing

Measurement

Professional Name:

Kennedy Peterson

Signature:

KEUPR

Date Retrieved:

1/10/2020

Time Retrieved:

8:15 AM

Retrieving

Measurement

Professional Name:

Kennedy
Peterson

Signature:

KEUPR

Date sent to Analytical
Lab:

1/10/2020

Time:

2:00 PM

Tracking Number:

Date Lab

Received:

Received

by:

Chain-of-Custody Cover Page



IEA, Inc.
9201 West Broadway, Suite 600
Brooklyn Park, MN 55445
763-315-7900

Device Type (circle)

Radtrak²

Pro Chex

CRM

Project Number

20191129

District:

Richfield

Address:

7000 10th Ave. S.

Building:

Stem

State, City, Zip

Richfield, MN 55423

Project Manager:

Daniel Holcomb

Date Disbursed:

1/7/20

Time:

830 am

Disbursing
Measurement

Professional Name:

Abe Dickinson

Signature:

Abe Dickinson

Date Retrieved:

1/10/20

Time Retrieved:

830 am

Retrieving
Measurement
Professional Name:

Abe Dickinson

Signature:

Abe Dickinson

Date sent to Analytical
Lab:

1/10/20

Time:

400 pm

Tracking Number:

Date Lab
Received:
Received
by:

Chain-of-Custody Cover Page



IEA, Inc.

9201 West Broadway, Suite 600
Brooklyn Park, MN 55445
763-315-7900

Device Type (circle)

Radtrak²

Pro Chek

CRM

Project Number

20191129

District:

RICHFIELD PUBLIC

Address:

6400 SHERIDAN AVE S

Building:

SCHOOLS
SHERIDAN HILLS
ELEMENTARY

State, City, Zip

RICHFIELD, MN 55423

Project Manager:

DANIEL HOLCOMB

Date Disbursed:

1/7/2020

Time:

11 AM

Disbursing

Measurement

Professional Name:

Kennedy Peterson

Signature:

KEUPR

Date Retrieved:

1/10/2020

Time Retrieved:

11 AM

Retrieving

Measurement

Professional Name:

Kennedy
Peterson

Signature:

KEUPR

Date sent to Analytical
Lab:

1/10/2020

Time:

2 PM

Tracking Number:

Date Lab

Received:

Received

by:

Chain-of-Custody Cover Page

IEA, Inc.

9201 West Broadway, Suite 600
Brooklyn Park, MN 55445
763-315-7900



Device Type (circle)

Radtrak²

Pro Chek

CRM

Project Number

20191129

District:

Richfield

Address:

7445 Harriet Ave

Building:

Transportation Office

State, City, Zip

Richfield, MN 55425

Project Manager:

Daniel Holcomb

Date Disbursed:

01/07/2020

Time:

10:45 AM

Disbursing
Measurement

Professional Name:

IAN O'Rourke

Signature:

claw 51

Date Retrieved:

01/10/2020

Time Retrieved:

11:35 AM

Retrieving
Measurement

Professional Name:

IAN O'Rourke

Signature:

claw 51

Date sent to Analytical
Lab:

Time:

Tracking Number:

Date Lab
Received:
Received
by:

Appendix C

Signed Non-Interference Agreement

Voluntary Compliance Form

RADON TESTING DECLARATION OF VOLUNTARY COMPLIANCE

As the responsible party for the test location, I hereby acknowledge that to the best of my knowledge:

- 1) I agree to keep and/or have kept the building(s) closed (except for normal entry and exit) for a minimum of 12 hours prior to the start of the test.
- 2) I agree to keep and/or have kept windows shut during the entire test period as well as all exterior doors except for normal entry and exit.
- 3) I agree to keep and/or have kept the heating and cooling system set to operate normally with the thermostat(s) set between 65 and 80° F.
- 4) I will and/or have not operated fans unless they are the primary and normal heating sources.
- 5) I will and/or have not excessively operated any clothes dryers, kitchen exhaust fans, and bathroom fans.
- 6) I will and/or have not tamper(ed) with, remove(d) or change(d) the location of the test device(s).

TEST SITE(S) INFORMATION

Responsible Party's Name (printed):

Don Kretsinger

Responsible Party's Signature:

Date:

1/6/2020

IN THE EVENT OF NONSIGNATURE

In the event that either the responsible party or occupant will not sign this form, provide an explanation of the reason for lack of signature:

Appendix D

Weather Report for Testing Days



CUSTOMIZED WEATHER HISTORY FOR MINNEAPOLIS, MINNESOTA

You're signed in as a
subscriber to our
Customized Weather

History; if you're on a shared computer, [please logout when you're done](#).

You can search for weather history in two ways:

- **Range of Dates** search allows you to search for a *consecutive range of dates* and is good if you want to know day by day history for a certain period of time, like "January 1 to January 15, 2008".
- **Same Dates Over a Range of Years** is good when you have a specific time of year—perhaps your wedding day, or a summer vacation, or harvest time—and you want to search for the weather over multiple years *for just those dates*. For example, "August 1 to 5 every year from 1970 to 1980."

Location *

ZIP/Postal Code or City,State

[Range of Dates](#)

To search a consecutive range of dates, select a start and end date.

Month Day Year

Jan 7 2020

to

Month Day Year

Jan 10 2020

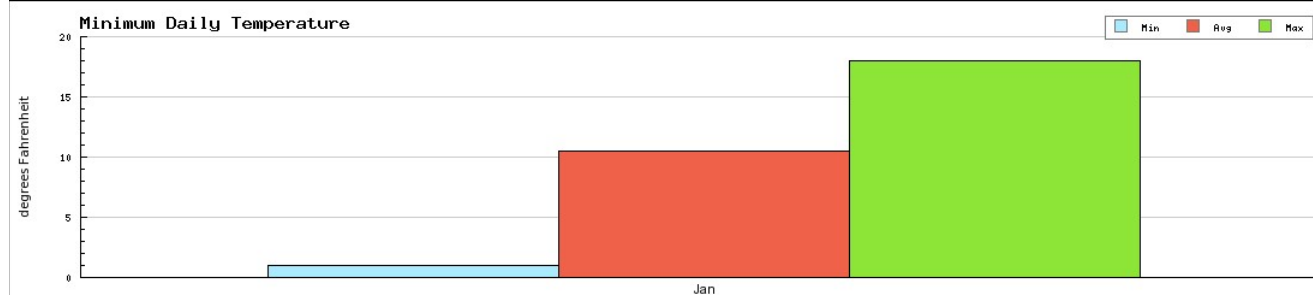
Latest data available: January 13, 2020.

[GO: Search by Range of Dates](#)

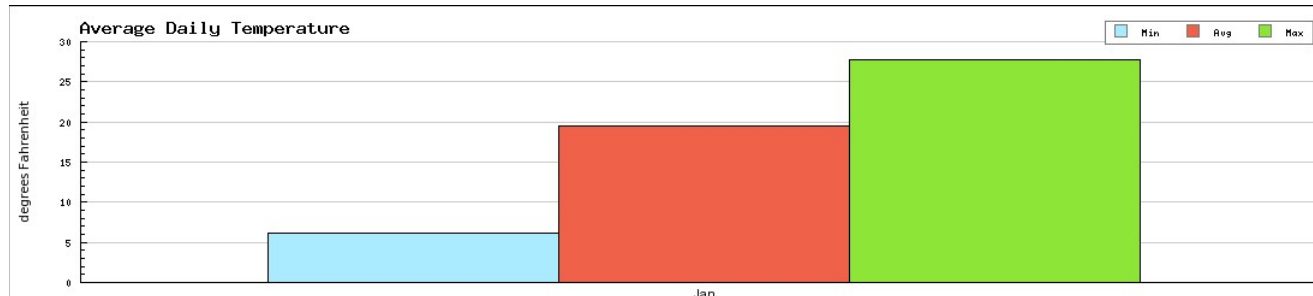
[Same Dates Over a Range of Years](#)

WEATHER FROM JANUARY 7, 2020 TO JANUARY 10, 2020

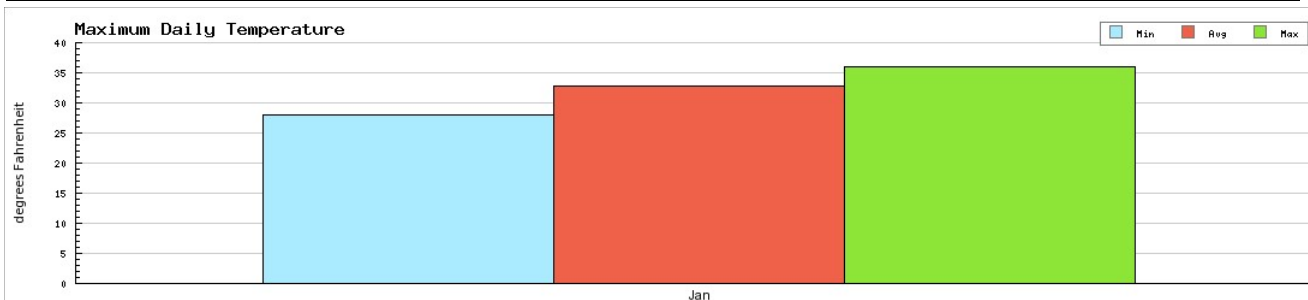
TEMPERATURE	LOW	AVERAGE	HIGH
Minimum Daily Data for 4 days. Download raw data	1.0°F (Jan 8, 2020)	10.5°F	18.0°F (Jan 7, 2020)



Average Daily Data for 4 days. Download raw data	6.1°F (Jan 8, 2020)	19.4°F	27.8°F (Jan 7, 2020)
---	------------------------	--------	-------------------------



Maximum Daily Data for 4 days. Download raw data	28.0°F (Jan 10, 2020)	32.8°F	36.0°F (Jan 7, 2020)
---	--------------------------	---------------	-------------------------

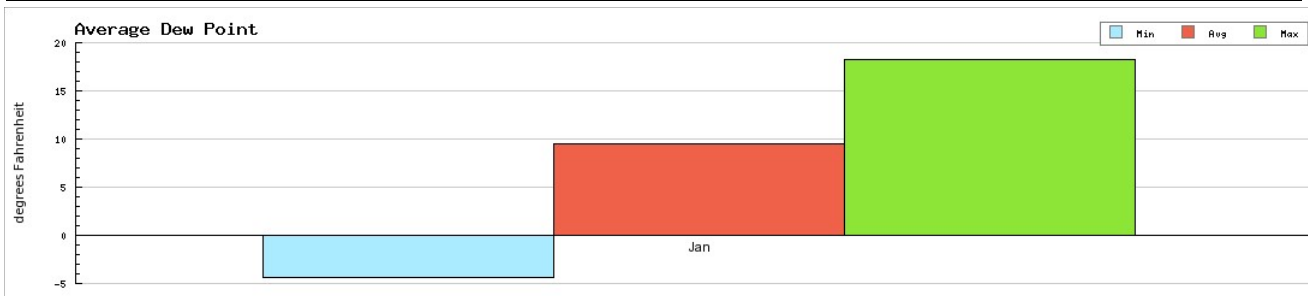


PRECIPITATION	LOW	AVERAGE	HIGH
Total Daily Data for 4 days. Download raw data	0.00 IN (Jan 7, 2020)	0.00 IN	0.00 IN (Jan 7, 2020)

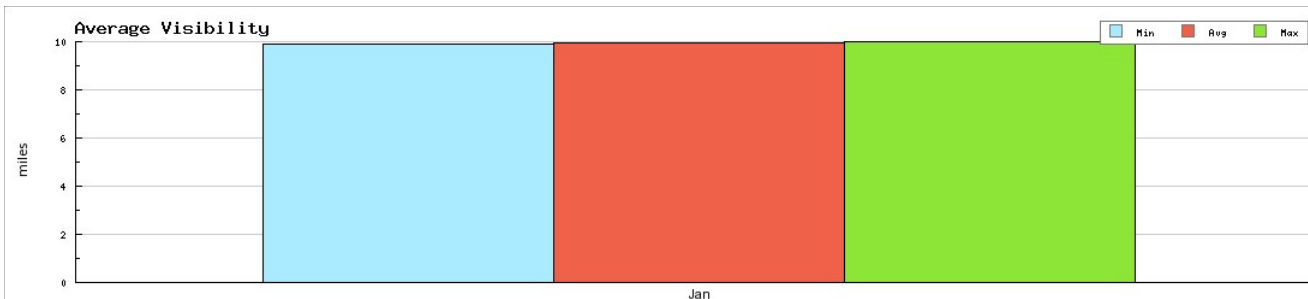


Note: Total Daily Precipitation is not reported by all stations on all days and there are situations where a value is not reported here, but an **Occurrence** of rain or snow is noted below, or vice versa.

Average Dew Point Data for 4 days. Download raw data	-4.4°F (Jan 8, 2020)	9.4°F	18.2°F (Jan 7, 2020)
---	-------------------------	--------------	-------------------------



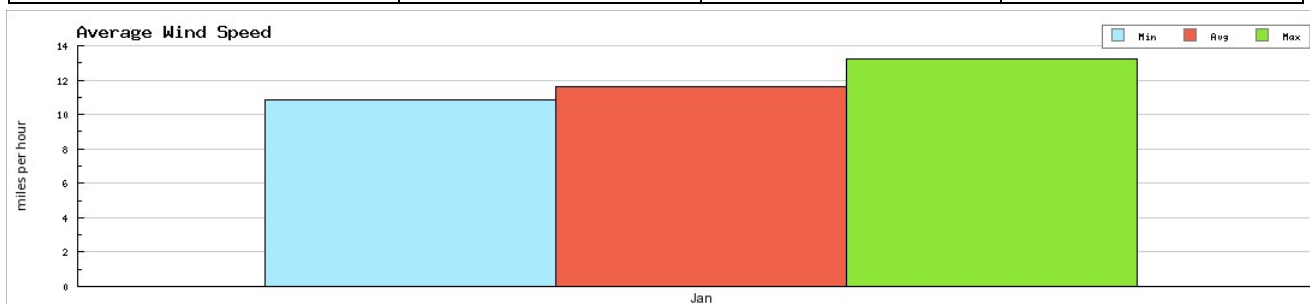
Average Visibility Data for 4 days. Download raw data	9.9 MI (Jan 10, 2020)	10.0 MI	10.0 MI (Jan 7, 2020)
--	--------------------------	----------------	--------------------------



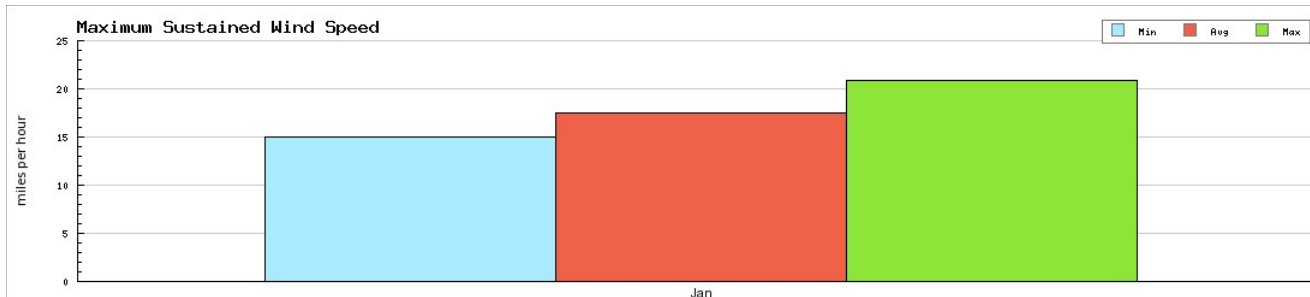
Snow Depth Data for 4 days. Download raw data	3.10 IN (Jan 7, 2020)	3.10 IN	3.10 IN (Jan 7, 2020)
--	--------------------------	----------------	--------------------------

Note: Snow Depth is not reported by all stations on all days and there are situations where there was actually snow on the ground, but this value is not reported. Note carefully the number of days for which this value is reported.

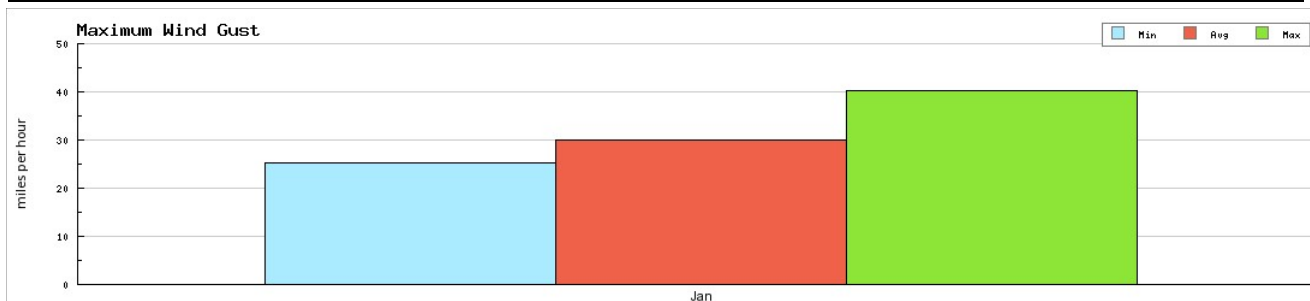
WIND	LOW	AVERAGE	HIGH
Average Daily Data for 4 days. Download raw data	10.82 MPH (Jan 8, 2020)	11.65 MPH	13.23 MPH (Jan 9, 2020)



Maximum Daily Data for 4 days. Download raw data	14.96 MPH (Jan 10, 2020)	17.55 MPH	20.83 MPH (Jan 9, 2020)
---	-----------------------------	------------------	----------------------------



Maximum Daily Gust Data for 4 days. Download raw data	25.32 MPH (Jan 8, 2020)	29.95 MPH	40.28 MPH (Jan 9, 2020)
--	----------------------------	------------------	----------------------------



PRESSURE	LOW	AVERAGE	HIGH
Sea Level Pressure Data for 4 days. Download raw data	29.89 IN (Jan 9, 2020)	30.11 IN	30.36 IN (Jan 8, 2020)

OCCURRENCES	DAYS	PERCENTAGE
Fog	0 of 4	0%
Rain	0 of 4	0%
Snow	1 of 4	25%
Hail	0 of 4	0%
Thunder	0 of 4	0%
Tornado	0 of 4	0%

Note: Not all occurrence of all weather events are reported for all stations. There are situations, for example, where an **Occurrence** of rain will be reported, but no **Total Daily Precipitation** logged.

Appendix E

MDH Reporting Forms

School Radon Testing Reporting Form

According to Minnesota Statute 123B.571 subd. 3, a school district that has tested its school buildings for the presence of radon shall report the results of its tests to the Department of Health. Please use this form to submit information about the most recent round or cycle of testing conducted for each building.

Instructions

1. Complete one form for each building tested. In this case, a building is defined as an occupied facility with a unique address. This includes administrative buildings.
2. Include this form, raw data (e.g. laboratory report) and a building map.
3. Submit this form when all work is completed for a round of testing. This includes reporting to the school board, and follow-up testing and post-mitigation testing, if applicable.
4. Email information to health.indoorair@state.mn.us.

Contact Information

Name:	
Mailing Address:	
Phone:	Email:

Initial Radon Testing Information

School Building Name:	
School District & District Number:	
Building Address:	
Test Kit Manufacturer:	Device Name:
Date of Kit Retrieval (DD/MM/YY):	Length of Test (days):
How many rooms were tested?	
Does the test period include weekends? <input type="checkbox"/> Yes <input type="checkbox"/> No	
Does the test period include school breaks or holidays? <input type="checkbox"/> Yes <input type="checkbox"/> No	

SCHOOL RADON TESTING REPORTING FORM

<p>Were all frequently-occupied ground contact rooms tested?¹ <input type="checkbox"/> Yes <input type="checkbox"/> No</p> <p style="margin-left: 40px;">If no, did you attempt to test all frequently occupied ground contact rooms, meaning test kits were placed in all these rooms? <input type="checkbox"/> Yes <input type="checkbox"/> No</p>
<p>How many rooms had results ≥ 4 pCi/L?:</p>
<p>Were the results reported at a school board meeting? <input type="checkbox"/> Yes <input type="checkbox"/> No</p>

Follow-up Testing, Mitigation, & Post-Mitigation Testing

If one or more rooms tested ≥ 4 pCi/L, please answer the questions below:

<p>How many rooms had follow-up testing?:</p>		
<p>Number of rooms with follow-up results</p>	<p>≥ 4 pCi/L:</p>	<p>< 4 pCi/L:</p>
<p>Of the rooms that had test results ≥ 4 pCi/L, how many rooms were:</p>		
<p>mitigated by HVAC balancing or operational changes? :</p>		
<p>mitigated by installation of active soil depressurization?:</p>		
<p>addressed through other corrective measures?²:</p>		
<p>What was the cost of the installation and/or HVAC service work, to mitigate radon? \$</p>		
<p>What is the known or anticipated annual operating cost of mitigation (estimate)? \$</p>		
<p>After radon mitigation, how many rooms were retested?:</p>		
<p>Post mitigation results (# of rooms)</p>	<p>≥ 4 pCi/L:</p>	<p>< 4 pCi/L:</p>

¹ This includes classrooms, offices, break rooms, laboratories, cafeterias, libraries, auditoriums, gymnasiums, etc. It includes rooms on grade and rooms above unoccupied spaces that are in contact with the ground, such as rooms above storage rooms, crawl spaces, tunnels, and boiler rooms. If only a sample or portion of rooms were tested, then respond with 'no'.

² 'Other corrective measures' could include moving staff out of a room and making a room unoccupied or trying to seal radon entry points.

School Radon Testing Reporting Form

According to Minnesota Statute 123B.571 subd. 3, a school district that has tested its school buildings for the presence of radon shall report the results of its tests to the Department of Health. Please use this form to submit information about the most recent round or cycle of testing conducted for each building.

Instructions

1. Complete one form for each building tested. In this case, a building is defined as an occupied facility with a unique address. This includes administrative buildings.
2. Include this form, raw data (e.g. laboratory report) and a building map.
3. Submit this form when all work is completed for a round of testing. This includes reporting to the school board, and follow-up testing and post-mitigation testing, if applicable.
4. Email information to health.indoorair@state.mn.us.

Contact Information

Name:	Dan Kretsinger
Mailing Address:	7001 Harriet Avenue South Richfield, MN 55423
Phone:	612-798-6081
Email:	Dan.Kretsinger@rpsmn.org

Initial Radon Testing Information

School Building Name: Central Education	
School District & District Number: Richfield Public Schools #280	
Building Address: 7145 Harriet Ave,	
Test Kit Manufacturer: Air Chek	Device Name: Pro Chek
Date of Kit Retrieval (DD/MM/YY): 1/10/20	Length of Test (days): 3
How many rooms were tested? 54	
Does the test period include weekends? <input type="checkbox"/> Yes <input checked="" type="checkbox"/> No	
Does the test period include school breaks or holidays? <input type="checkbox"/> Yes <input checked="" type="checkbox"/> No	

SCHOOL RADON TESTING REPORTING FORM

Were all frequently-occupied ground contact rooms tested? ¹ <input type="checkbox"/> Yes <input checked="" type="checkbox"/> No If no, did you attempt to test all frequently occupied ground contact rooms, meaning test kits were placed in all these rooms? <input checked="" type="checkbox"/> Yes <input type="checkbox"/> No
How many rooms had results ≥ 4 pCi/L?: 0
Were the results reported at a school board meeting? <input checked="" type="checkbox"/> Yes <input type="checkbox"/> No

Follow-up Testing, Mitigation, & Post-Mitigation Testing

If one or more rooms tested ≥ 4 pCi/L, please answer the questions below:

How many rooms had follow-up testing?:		
Number of rooms with follow-up results	≥ 4 pCi/L:	< 4 pCi/L:
Of the rooms that had test results ≥ 4 pCi/L, how many rooms were:		
mitigated by HVAC balancing or operational changes? :		
mitigated by installation of active soil depressurization?:		
addressed through other corrective measures? ² :		
What was the cost of the installation and/or HVAC service work, to mitigate radon? \$		
What is the known or anticipated annual operating cost of mitigation (estimate)? \$		
After radon mitigation, how many rooms were retested?:		
Post mitigation results (# of rooms)	≥ 4 pCi/L:	< 4 pCi/L:

¹ This includes classrooms, offices, break rooms, laboratories, cafeterias, libraries, auditoriums, gymnasiums, etc. It includes rooms on grade and rooms above unoccupied spaces that are in contact with the ground, such as rooms above storage rooms, crawl spaces, tunnels, and boiler rooms. If only a sample or portion of rooms were tested, then respond with 'no'.

² 'Other corrective measures' could include moving staff out of a room and making a room unoccupied or trying to seal radon entry points.

School Radon Testing Reporting Form

According to Minnesota Statute 123B.571 subd. 3, a school district that has tested its school buildings for the presence of radon shall report the results of its tests to the Department of Health. Please use this form to submit information about the most recent round or cycle of testing conducted for each building.

Instructions

1. Complete one form for each building tested. In this case, a building is defined as an occupied facility with a unique address. This includes administrative buildings.
2. Include this form, raw data (e.g. laboratory report) and a building map.
3. Submit this form when all work is completed for a round of testing. This includes reporting to the school board, and follow-up testing and post-mitigation testing, if applicable.
4. Email information to health.indoorair@state.mn.us.

Contact Information

Name:	
Mailing Address:	
Phone:	Email:

Initial Radon Testing Information

School Building Name:	
School District & District Number:	
Building Address:	
Test Kit Manufacturer:	Device Name:
Date of Kit Retrieval (DD/MM/YY):	Length of Test (days):
How many rooms were tested?	
Does the test period include weekends? <input type="checkbox"/> Yes <input type="checkbox"/> No	
Does the test period include school breaks or holidays? <input type="checkbox"/> Yes <input type="checkbox"/> No	

SCHOOL RADON TESTING REPORTING FORM

Were all frequently-occupied ground contact rooms tested? ¹ <input type="checkbox"/> Yes <input type="checkbox"/> No If no, did you attempt to test all frequently occupied ground contact rooms, meaning test kits were placed in all these rooms? <input type="checkbox"/> Yes <input type="checkbox"/> No
How many rooms had results ≥ 4 pCi/L?:
Were the results reported at a school board meeting? <input type="checkbox"/> Yes <input type="checkbox"/> No

Follow-up Testing, Mitigation, & Post-Mitigation Testing

If one or more rooms tested ≥ 4 pCi/L, please answer the questions below:

How many rooms had follow-up testing?:		
Number of rooms with follow-up results	≥ 4 pCi/L:	< 4 pCi/L:
Of the rooms that had test results ≥ 4 pCi/L, how many rooms were:		
mitigated by HVAC balancing or operational changes? :		
mitigated by installation of active soil depressurization?:		
addressed through other corrective measures? ² :		
What was the cost of the installation and/or HVAC service work, to mitigate radon? \$		
What is the known or anticipated annual operating cost of mitigation (estimate)? \$		
After radon mitigation, how many rooms were retested?:		
Post mitigation results (# of rooms)	≥ 4 pCi/L:	< 4 pCi/L:

¹ This includes classrooms, offices, break rooms, laboratories, cafeterias, libraries, auditoriums, gymnasiums, etc. It includes rooms on grade and rooms above unoccupied spaces that are in contact with the ground, such as rooms above storage rooms, crawl spaces, tunnels, and boiler rooms. If only a sample or portion of rooms were tested, then respond with 'no'.

² 'Other corrective measures' could include moving staff out of a room and making a room unoccupied or trying to seal radon entry points.

School Radon Testing Reporting Form

According to Minnesota Statute 123B.571 subd. 3, a school district that has tested its school buildings for the presence of radon shall report the results of its tests to the Department of Health. Please use this form to submit information about the most recent round or cycle of testing conducted for each building.

Instructions

1. Complete one form for each building tested. In this case, a building is defined as an occupied facility with a unique address. This includes administrative buildings.
2. Include this form, raw data (e.g. laboratory report) and a building map.
3. Submit this form when all work is completed for a round of testing. This includes reporting to the school board, and follow-up testing and post-mitigation testing, if applicable.
4. Email information to health.indoorair@state.mn.us.

Contact Information

Name:	
Mailing Address:	
Phone:	Email:

Initial Radon Testing Information

School Building Name:	
School District & District Number:	
Building Address:	
Test Kit Manufacturer:	Device Name:
Date of Kit Retrieval (DD/MM/YY):	Length of Test (days):
How many rooms were tested?	
Does the test period include weekends? <input type="checkbox"/> Yes <input type="checkbox"/> No	
Does the test period include school breaks or holidays? <input type="checkbox"/> Yes <input type="checkbox"/> No	

SCHOOL RADON TESTING REPORTING FORM

<p>Were all frequently-occupied ground contact rooms tested?¹ <input type="checkbox"/> Yes <input type="checkbox"/> No</p> <p style="margin-left: 40px;">If no, did you attempt to test all frequently occupied ground contact rooms, meaning test kits were placed in all these rooms? <input type="checkbox"/> Yes <input type="checkbox"/> No</p>
<p>How many rooms had results ≥ 4 pCi/L?:</p>
<p>Were the results reported at a school board meeting? <input type="checkbox"/> Yes <input type="checkbox"/> No</p>

Follow-up Testing, Mitigation, & Post-Mitigation Testing

If one or more rooms tested ≥ 4 pCi/L, please answer the questions below:

<p>How many rooms had follow-up testing?:</p>		
<p>Number of rooms with follow-up results</p>	<p>≥ 4 pCi/L:</p>	<p>< 4 pCi/L:</p>
<p>Of the rooms that had test results ≥ 4 pCi/L, how many rooms were:</p>		
<p>mitigated by HVAC balancing or operational changes? :</p>		
<p>mitigated by installation of active soil depressurization?:</p>		
<p>addressed through other corrective measures?²:</p>		
<p>What was the cost of the installation and/or HVAC service work, to mitigate radon? \$</p>		
<p>What is the known or anticipated annual operating cost of mitigation (estimate)? \$</p>		
<p>After radon mitigation, how many rooms were retested?:</p>		
<p>Post mitigation results (# of rooms)</p>	<p>≥ 4 pCi/L:</p>	<p>< 4 pCi/L:</p>

¹ This includes classrooms, offices, break rooms, laboratories, cafeterias, libraries, auditoriums, gymnasiums, etc. It includes rooms on grade and rooms above unoccupied spaces that are in contact with the ground, such as rooms above storage rooms, crawl spaces, tunnels, and boiler rooms. If only a sample or portion of rooms were tested, then respond with 'no'.

² 'Other corrective measures' could include moving staff out of a room and making a room unoccupied or trying to seal radon entry points.

School Radon Testing Reporting Form

According to Minnesota Statute 123B.571 subd. 3, a school district that has tested its school buildings for the presence of radon shall report the results of its tests to the Department of Health. Please use this form to submit information about the most recent round or cycle of testing conducted for each building.

Instructions

1. Complete one form for each building tested. In this case, a building is defined as an occupied facility with a unique address. This includes administrative buildings.
2. Include this form, raw data (e.g. laboratory report) and a building map.
3. Submit this form when all work is completed for a round of testing. This includes reporting to the school board, and follow-up testing and post-mitigation testing, if applicable.
4. Email information to health.indoorair@state.mn.us.

Contact Information

Name:	
Mailing Address:	
Phone:	Email:

Initial Radon Testing Information

School Building Name:	
School District & District Number:	
Building Address:	
Test Kit Manufacturer:	Device Name:
Date of Kit Retrieval (DD/MM/YY):	Length of Test (days):
How many rooms were tested?	
Does the test period include weekends? <input type="checkbox"/> Yes <input type="checkbox"/> No	
Does the test period include school breaks or holidays? <input type="checkbox"/> Yes <input type="checkbox"/> No	

SCHOOL RADON TESTING REPORTING FORM

Were all frequently-occupied ground contact rooms tested? ¹ <input type="checkbox"/> Yes <input type="checkbox"/> No If no, did you attempt to test all frequently occupied ground contact rooms, meaning test kits were placed in all these rooms? <input type="checkbox"/> Yes <input type="checkbox"/> No
How many rooms had results ≥ 4 pCi/L?:
Were the results reported at a school board meeting? <input type="checkbox"/> Yes <input type="checkbox"/> No

Follow-up Testing, Mitigation, & Post-Mitigation Testing

If one or more rooms tested ≥ 4 pCi/L, please answer the questions below:

How many rooms had follow-up testing?:		
Number of rooms with follow-up results	≥ 4 pCi/L:	< 4 pCi/L:
Of the rooms that had test results ≥ 4 pCi/L, how many rooms were:		
mitigated by HVAC balancing or operational changes? :		
mitigated by installation of active soil depressurization?:		
addressed through other corrective measures? ² :		
What was the cost of the installation and/or HVAC service work, to mitigate radon? \$		
What is the known or anticipated annual operating cost of mitigation (estimate)? \$		
After radon mitigation, how many rooms were retested?:		
Post mitigation results (# of rooms)	≥ 4 pCi/L:	< 4 pCi/L:

¹ This includes classrooms, offices, break rooms, laboratories, cafeterias, libraries, auditoriums, gymnasiums, etc. It includes rooms on grade and rooms above unoccupied spaces that are in contact with the ground, such as rooms above storage rooms, crawl spaces, tunnels, and boiler rooms. If only a sample or portion of rooms were tested, then respond with 'no'.

² 'Other corrective measures' could include moving staff out of a room and making a room unoccupied or trying to seal radon entry points.

School Radon Testing Reporting Form

According to Minnesota Statute 123B.571 subd. 3, a school district that has tested its school buildings for the presence of radon shall report the results of its tests to the Department of Health. Please use this form to submit information about the most recent round or cycle of testing conducted for each building.

Instructions

1. Complete one form for each building tested. In this case, a building is defined as an occupied facility with a unique address. This includes administrative buildings.
2. Include this form, raw data (e.g. laboratory report) and a building map.
3. Submit this form when all work is completed for a round of testing. This includes reporting to the school board, and follow-up testing and post-mitigation testing, if applicable.
4. Email information to health.indoorair@state.mn.us.

Contact Information

Name:	
Mailing Address:	
Phone:	Email:

Initial Radon Testing Information

School Building Name:	
School District & District Number:	
Building Address:	
Test Kit Manufacturer:	Device Name:
Date of Kit Retrieval (DD/MM/YY):	Length of Test (days):
How many rooms were tested?	
Does the test period include weekends? <input type="checkbox"/> Yes <input type="checkbox"/> No	
Does the test period include school breaks or holidays? <input type="checkbox"/> Yes <input type="checkbox"/> No	

SCHOOL RADON TESTING REPORTING FORM

Were all frequently-occupied ground contact rooms tested? ¹ <input type="checkbox"/> Yes <input type="checkbox"/> No If no, did you attempt to test all frequently occupied ground contact rooms, meaning test kits were placed in all these rooms? <input type="checkbox"/> Yes <input type="checkbox"/> No
How many rooms had results ≥ 4 pCi/L?:
Were the results reported at a school board meeting? <input type="checkbox"/> Yes <input type="checkbox"/> No

Follow-up Testing, Mitigation, & Post-Mitigation Testing

If one or more rooms tested ≥ 4 pCi/L, please answer the questions below:

How many rooms had follow-up testing?:		
Number of rooms with follow-up results	≥ 4 pCi/L:	< 4 pCi/L:
Of the rooms that had test results ≥ 4 pCi/L, how many rooms were:		
mitigated by HVAC balancing or operational changes? :		
mitigated by installation of active soil depressurization?:		
addressed through other corrective measures? ² :		
What was the cost of the installation and/or HVAC service work, to mitigate radon? \$		
What is the known or anticipated annual operating cost of mitigation (estimate)? \$		
After radon mitigation, how many rooms were retested?:		
Post mitigation results (# of rooms)	≥ 4 pCi/L:	< 4 pCi/L:

¹ This includes classrooms, offices, break rooms, laboratories, cafeterias, libraries, auditoriums, gymnasiums, etc. It includes rooms on grade and rooms above unoccupied spaces that are in contact with the ground, such as rooms above storage rooms, crawl spaces, tunnels, and boiler rooms. If only a sample or portion of rooms were tested, then respond with 'no'.

² 'Other corrective measures' could include moving staff out of a room and making a room unoccupied or trying to seal radon entry points.

School Radon Testing Reporting Form

According to Minnesota Statute 123B.571 subd. 3, a school district that has tested its school buildings for the presence of radon shall report the results of its tests to the Department of Health. Please use this form to submit information about the most recent round or cycle of testing conducted for each building.

Instructions

1. Complete one form for each building tested. In this case, a building is defined as an occupied facility with a unique address. This includes administrative buildings.
2. Include this form, raw data (e.g. laboratory report) and a building map.
3. Submit this form when all work is completed for a round of testing. This includes reporting to the school board, and follow-up testing and post-mitigation testing, if applicable.
4. Email information to health.indoorair@state.mn.us.

Contact Information

Name:	
Mailing Address:	
Phone:	Email:

Initial Radon Testing Information

School Building Name:	
School District & District Number:	
Building Address:	
Test Kit Manufacturer:	Device Name:
Date of Kit Retrieval (DD/MM/YY):	Length of Test (days):
How many rooms were tested?	
Does the test period include weekends? <input type="checkbox"/> Yes <input type="checkbox"/> No	
Does the test period include school breaks or holidays? <input type="checkbox"/> Yes <input type="checkbox"/> No	

SCHOOL RADON TESTING REPORTING FORM

<p>Were all frequently-occupied ground contact rooms tested?¹ <input type="checkbox"/> Yes <input type="checkbox"/> No</p> <p style="padding-left: 40px;">If no, did you attempt to test all frequently occupied ground contact rooms, meaning test kits were placed in all these rooms? <input type="checkbox"/> Yes <input type="checkbox"/> No</p>
<p>How many rooms had results ≥ 4 pCi/L?:</p>
<p>Were the results reported at a school board meeting? <input type="checkbox"/> Yes <input type="checkbox"/> No</p>

Follow-up Testing, Mitigation, & Post-Mitigation Testing

If one or more rooms tested ≥ 4 pCi/L, please answer the questions below:

<p>How many rooms had follow-up testing?:</p>		
<p>Number of rooms with follow-up results</p>	<p>≥ 4 pCi/L:</p>	<p>< 4 pCi/L:</p>
<p>Of the rooms that had test results ≥ 4 pCi/L, how many rooms were:</p>		
<p>mitigated by HVAC balancing or operational changes? :</p>		
<p>mitigated by installation of active soil depressurization?:</p>		
<p>addressed through other corrective measures?²:</p>		
<p>What was the cost of the installation and/or HVAC service work, to mitigate radon? \$</p>		
<p>What is the known or anticipated annual operating cost of mitigation (estimate)? \$</p>		
<p>After radon mitigation, how many rooms were retested?:</p>		
<p>Post mitigation results (# of rooms)</p>	<p>≥ 4 pCi/L:</p>	<p>< 4 pCi/L:</p>

¹ This includes classrooms, offices, break rooms, laboratories, cafeterias, libraries, auditoriums, gymnasiums, etc. It includes rooms on grade and rooms above unoccupied spaces that are in contact with the ground, such as rooms above storage rooms, crawl spaces, tunnels, and boiler rooms. If only a sample or portion of rooms were tested, then respond with 'no'.

² 'Other corrective measures' could include moving staff out of a room and making a room unoccupied or trying to seal radon entry points.

School Radon Testing Reporting Form

According to Minnesota Statute 123B.571 subd. 3, a school district that has tested its school buildings for the presence of radon shall report the results of its tests to the Department of Health. Please use this form to submit information about the most recent round or cycle of testing conducted for each building.

Instructions

1. Complete one form for each building tested. In this case, a building is defined as an occupied facility with a unique address. This includes administrative buildings.
2. Include this form, raw data (e.g. laboratory report) and a building map.
3. Submit this form when all work is completed for a round of testing. This includes reporting to the school board, and follow-up testing and post-mitigation testing, if applicable.
4. Email information to health.indoorair@state.mn.us.

Contact Information

Name:	
Mailing Address:	
Phone:	Email:

Initial Radon Testing Information

School Building Name:	
School District & District Number:	
Building Address:	
Test Kit Manufacturer:	Device Name:
Date of Kit Retrieval (DD/MM/YY):	Length of Test (days):
How many rooms were tested?	
Does the test period include weekends? <input type="checkbox"/> Yes <input type="checkbox"/> No	
Does the test period include school breaks or holidays? <input type="checkbox"/> Yes <input type="checkbox"/> No	

SCHOOL RADON TESTING REPORTING FORM

<p>Were all frequently-occupied ground contact rooms tested?¹ <input type="checkbox"/> Yes <input type="checkbox"/> No</p> <p style="padding-left: 40px;">If no, did you attempt to test all frequently occupied ground contact rooms, meaning test kits were placed in all these rooms? <input type="checkbox"/> Yes <input type="checkbox"/> No</p>
<p>How many rooms had results ≥ 4 pCi/L?:</p>
<p>Were the results reported at a school board meeting? <input type="checkbox"/> Yes <input type="checkbox"/> No</p>

Follow-up Testing, Mitigation, & Post-Mitigation Testing

If one or more rooms tested ≥ 4 pCi/L, please answer the questions below:

<p>How many rooms had follow-up testing?:</p>		
<p>Number of rooms with follow-up results</p>	<p>≥ 4 pCi/L:</p>	<p>< 4 pCi/L:</p>
<p>Of the rooms that had test results ≥ 4 pCi/L, how many rooms were:</p>		
<p>mitigated by HVAC balancing or operational changes? :</p>		
<p>mitigated by installation of active soil depressurization?:</p>		
<p>addressed through other corrective measures?²:</p>		
<p>What was the cost of the installation and/or HVAC service work, to mitigate radon? \$</p>		
<p>What is the known or anticipated annual operating cost of mitigation (estimate)? \$</p>		
<p>After radon mitigation, how many rooms were retested?:</p>		
<p>Post mitigation results (# of rooms)</p>	<p>≥ 4 pCi/L:</p>	<p>< 4 pCi/L:</p>

¹ This includes classrooms, offices, break rooms, laboratories, cafeterias, libraries, auditoriums, gymnasiums, etc. It includes rooms on grade and rooms above unoccupied spaces that are in contact with the ground, such as rooms above storage rooms, crawl spaces, tunnels, and boiler rooms. If only a sample or portion of rooms were tested, then respond with 'no'.

² 'Other corrective measures' could include moving staff out of a room and making a room unoccupied or trying to seal radon entry points.

School Radon Testing Reporting Form

According to Minnesota Statute 123B.571 subd. 3, a school district that has tested its school buildings for the presence of radon shall report the results of its tests to the Department of Health. Please use this form to submit information about the most recent round or cycle of testing conducted for each building.

Instructions

1. Complete one form for each building tested. In this case, a building is defined as an occupied facility with a unique address. This includes administrative buildings.
2. Include this form, raw data (e.g. laboratory report) and a building map.
3. Submit this form when all work is completed for a round of testing. This includes reporting to the school board, and follow-up testing and post-mitigation testing, if applicable.
4. Email information to health.indoorair@state.mn.us.

Contact Information

Name:	
Mailing Address:	
Phone:	Email:

Initial Radon Testing Information

School Building Name:	
School District & District Number:	
Building Address:	
Test Kit Manufacturer:	Device Name:
Date of Kit Retrieval (DD/MM/YY):	Length of Test (days):
How many rooms were tested?	
Does the test period include weekends? <input type="checkbox"/> Yes <input type="checkbox"/> No	
Does the test period include school breaks or holidays? <input type="checkbox"/> Yes <input type="checkbox"/> No	

SCHOOL RADON TESTING REPORTING FORM

<p>Were all frequently-occupied ground contact rooms tested?¹ <input type="checkbox"/> Yes <input type="checkbox"/> No</p> <p style="padding-left: 40px;">If no, did you attempt to test all frequently occupied ground contact rooms, meaning test kits were placed in all these rooms? <input type="checkbox"/> Yes <input type="checkbox"/> No</p>
<p>How many rooms had results ≥ 4 pCi/L?:</p>
<p>Were the results reported at a school board meeting? <input type="checkbox"/> Yes <input type="checkbox"/> No</p>

Follow-up Testing, Mitigation, & Post-Mitigation Testing

If one or more rooms tested ≥ 4 pCi/L, please answer the questions below:

<p>How many rooms had follow-up testing?:</p>		
<p>Number of rooms with follow-up results</p>	<p>≥ 4 pCi/L:</p>	<p>< 4 pCi/L:</p>
<p>Of the rooms that had test results ≥ 4 pCi/L, how many rooms were:</p>		
<p>mitigated by HVAC balancing or operational changes? :</p>		
<p>mitigated by installation of active soil depressurization?:</p>		
<p>addressed through other corrective measures?²:</p>		
<p>What was the cost of the installation and/or HVAC service work, to mitigate radon? \$</p>		
<p>What is the known or anticipated annual operating cost of mitigation (estimate)? \$</p>		
<p>After radon mitigation, how many rooms were retested?:</p>		
<p>Post mitigation results (# of rooms)</p>	<p>≥ 4 pCi/L:</p>	<p>< 4 pCi/L:</p>

¹ This includes classrooms, offices, break rooms, laboratories, cafeterias, libraries, auditoriums, gymnasiums, etc. It includes rooms on grade and rooms above unoccupied spaces that are in contact with the ground, such as rooms above storage rooms, crawl spaces, tunnels, and boiler rooms. If only a sample or portion of rooms were tested, then respond with 'no'.

² 'Other corrective measures' could include moving staff out of a room and making a room unoccupied or trying to seal radon entry points.